



AN ISO 9001:2015 CERTIFIED ORGANIZATION



# Annual Report 2020-21

## HIMALAYAN INSTITUTE FOR ENVIRONMENT ECOLOGY & DEVELOPMENT (HIFEED)

(A Centre of Excellence, Recognized by Government of Uttarakhand)  
(AN ISO 9001:2015 CERTIFIED ORGANIZATION)

### Registered & Head Office:

Post Bag No. 7, Hifeed Campus, Ranichauri- 249199, District- Tehri Garhwal, Uttarakhand (INDIA)  
Phone & Fax No.: (01376) 252149  
E-mail: hifeeduttaranchal@gmail.com, drkamalbahuguna@gmail.com  
Website: <https://www.hifeed.org>

### Administrative Office:

Street No. 4, Shastri Nagar, Haridwar Road, Dehradun- 248001, Uttarakhand (INDIA)  
Phone & Fax No. : (0135) 2666865

*Hifeed, A Mission for Upliftment of the Nation*



**Hifeed Campus  
Ranichauri, Tehri Garhwal  
Uttarakhand, India**

**PREFACE**

The Himalayan region in India is considered to be fragile and is susceptible to frequent earthquakes, erosions, flood and other natural calamities. This adversely affects the living, environment, ecology, and economy in the entire region. People living in the hilly regions largely depend on agriculture and animal husbandry for a stable livelihood. However, the productivity achieved by the hill folk is unfortunately not enough. Many-a-times, their productivity is not able to substantiate the basic needs for life sustenance. The lack of fertile soil, non-availability of improved variety of food crops, and the absence of better means of irrigation are some hurdles that hinder the productivity.

Agriculture coupled with animal husbandry is the main stake of livelihood of hill people but the productivity so meagre that it cannot cope up round the year need of the family. Not much has been done to improve the per unit productivity of the area because of lack of means of irrigation, fertile soil and use of improved varieties of food crops. Another commonly witnessed issue is that of women drudgery. Traditionally, women are expected to take charge of the agricultural operations along with activities such as cattle rearing and taking care of their children. So, women often remain at a disadvantage. Additionally, there are no women friendly tools available. Even if they are available, they are inaccessible.

Furthermore, the lack of enterprises in the hilly region makes it difficult for the youth to find jobs. This is what leads to mass-migration. Thus, after analyzing problems such as those mentioned above, Himalayan Institute For Environment, Ecology, and Development (HIFEED) took birth in 1995 as a R&D Civil Society Organization. HIFEED aims to work for the upliftment and sustainable development of communities living in the hilly and mountainous regions without discriminating between gender, sex, race, cast, religion, and creed of the community members.

HIFEED works for the welfare of all communities and also aims to protect the environment and ecology of areas where it operates. Having completed the 25 year mark in the development sector, HIFEED has worked in more than seven Indian States with various developmental and monitoring and evaluation assignments. The organization was created by a set of experienced and eminent social scientists and professionals to assess developmental issues and further research on policies and strategies to strive for social justice.

As we move forward, HIFEED is strategizing and reprogramming the past and present plans of action to empower and sensitize people to maximize the goals and achievements by creating livelihood opportunities. Today, we are enveloped with environmental and socio-economic problems such as migration, poor economic growth and downtrends in environmental elements of sustainability. With the motivation to sacrifice something today for the generations to come, HIFEED aims to significantly uplift the communities that will one day be acknowledged.

I appreciate the arduous efforts of Board Members and Staff Members of HIFEED who are concerned with the cause of upliftment of Uttarakhand and all those who are determined to work dedicatedly to make a contribution in empowerment of Uttarakhand through their creative work.



(KAMAL BAHUGUNA)  
EXECUTIVE DIRECTOR



**ROJECTS, PROGRAMMES & ASSIGNMENTS UNDERTAKEN BY HIFEED  
DURING THE LAST TWO AND HALF DECADES**

During the last two and half decade, the Organization has carried out diversified projects, programmes and activities in different States of the Country which are mentioned as below:

**1. Income & Employment Generation**

- i.** A Pilot Project on Production & Processing of Angora Wool for Income & Employment Generation in District Tehri Garhwal of Uttarakhand
- ii.** Marketing of Rural Products in Uttarakhand through Grameen Shilp Emporiums
- iii.** Angora Wool Development Project under Integrated Wool Improvement Programme
- iv.** Artistic Angora Shawl Production in District Tehri Garhwal of Uttarakhand under Ambedkar Hastshilp Vikas Yojna
- v.** Development of Angora Wool Sector for Tribal Communities in of District Tehri Garhwal of Uttarakhand
- vi.** Coordinated Programme for the Development of Angora Wool Sector to Enhance Income and Employment Generation Opportunities in Tribal Areas of Five Districts of Uttarakhand through Partner NGOs
- vii.** Implementation of Oak Tasar Development Project in District Chamoli of Uttarakhand
- viii.** A Pilot Project for Promotion of Village Tourism in the Outer Periphery of Tehri Dam to Ensure Sustainable Livelihood Options to Youths and Women by Protecting Environmental and Local Cultural Heritage under National Mission on Himalayan Studies (NMHS)
- ix.** Strengthen Livelihood Opportunities of Small Ruminant Rearers in Eco - Frazile Mountainous Tribal Regions of Uttarakhand through Organizational Networking System for Product Development & Diversification and Marketing

**2. Agriculture & Horticulture**

- i.** Establishment of Processing & Preservation Centre of Horticulture Produces for Employment and Income Generation in District Tehri Garhwal of Uttarakhand
- ii.** Joint Fam Management for Off - Season Vegetable Production in Hill Area through Adopting Eco-Friendly Crop Rotations and Practices, Phase- I
- iii.** Geranium Farming: A New Perspective in Boosting Economy of Uttarakhand
- iv.** Contractual Farming of Chirayata in District Tehri Garhwal of Uttarakhand
- v.** Promoting System of Rice/Crop Intensification in Mountain Farms of Uttarakhand
- vi.** Joint Fam Management for Off - Season Vegetable Production in Hill Area through Adopting Eco-Friendly Crop Rotations and Practices, Phase- II
- vii.** Enhancing Livelihood Opportunities in Eco - Fragile Mountaineous Zone of District Tehri Garhwal of Uttarakhand close to Tehri Dam Reservoir through Sustainable Agriculture Practices for Quality Vegetable Practices through Advanced Protected and Guided T echnology
- viii.** A Pilot Project for Establishment of Model Bio -Villages with the Concept of Organic Vegetable Cultivation through Protected Cultivation Techniques for Livelihood Promotion of Women in District Tehri Garhwal in the State of Uttarakhand
- ix.** Livelihood Empowerment of Women in Five Villages of Narendra Nagar Block of District Tehri Garhwal in the State of Uttarakhand by Introducing Organic Cultivation of Pulses and Spices through Protected Cultivation Techniques for Establishment of Model Bio -Villages
- x.** Enhancing Livelihood Opportunities in Eco-fragile Mountainous Tribal Areas through Improved Agricultural Package of Practices in Low Volume and High Value Organic Crops of Pulses & Spices in Rainfed and Irrigated Pockets of Selected 10 Villages in Kalsi and Chakrata Blocks of District Dehradun of Uttarakhand
- xi.** Protected Off-Season Vegetable Cultivation Project for Income & Employment Generation for Women in District Pauri Garhwal of Uttarakhand
- xii.** Protected Off-Season Vegetable Cultivation Project for Income & Employment Generation for Women in Pauri Block of District Pauri Garhwal of Uttarakhand
- xiii.** Formation and Promotion of Farmer Producer Organizations (FPOs) under the Central Sector Scheme for Formation & Promotion of 10,000 FPOs

### 3. Research & Technology Development

- i. In Vitro Micro Tuber Seed Production of Potato cv. Kufri Himalini for Commercial Cultivation in Hilly Regions of Uttarakhand
- ii. Research & Development and Application of Natural and Organic Dyes on Woolen Products in Five Districts of Uttarakhand
- iii. Development and Performance Evaluation of an Industrial Scale Atmospheric Air Plasma System to Treat Angora Wool for Manufacturing of 100% Angora Products
- iv. A Pilot Project for Creating Agro Ecological Model in Four Villages of Tehri Garhwal
- v. Bio-methanation, Biogas and Bio Slurry Generation from Food Waste at Pilgrim Destination of Srinagar, Garhwal by Installing Improved Tubular Modular Bio Digester in Collaboration with Nagar Palika Parishad, Srinagar

### 4. Animal Husbandry & Dairying

- i. Women Dairy Development Project under Scheme of Support to Training and Employment Programme for Women (STEP) in District Tehri Garhwal of Uttarakhand
- ii. Animal Health Check-up Programmes in Tehri Dam Affected Villages of District Tehri Garhwal of Uttarakhand

### 5. Water & Sanitation

- i. Total Sanitation Campaign (TSC)
- ii. Uttarakhand Rural Water Supply and Environmental Sanitation Project - Swajal Project
- iii. National Rural Drinking Water Quality Monitoring and Surveillance Programme in District Dehradun of Uttarakhand
- iv. Jal Jeevan Mission (JJM) in District Dehradun, Tehri Garhwal, Uttarkashi and Pauri Garhwal in the State of Uttarakhand



HIFEED Campus, Ranichauri, T.G.

### 6. Health & HIV/AIDS

- i. Targeted Intervention Project for HIV/AIDS for Female Sex Workers (FSW), Street Children, Men Having Sex with Men (MSM) and Injecting Drug Users (IDUs) in District Dehradun of Uttarakhand
- ii. Heart Check-up Programmes
- iii. Establishment of 30 Beds Yoga & Naturopathy Hospital at HIFEED Campus, Ranichauri, Tehri Garhwal

### 7. Consultancy Services

- i. Consultancy Service for Preparing Slum Profiles and Conducting Household Surveys in Slums and Informal Settlements of 63 Towns in Uttarakhand State
- ii. Conducting Data Collection and Data Entry for E-tracking System for PMEGP Units of Khadi & Village Industries Commission (KVIC)
- iii. Integrated Solid Waste Management Project for Information, Education & Communication (IEC) and Facilitation for Solid Waste Management of Dehradun Nagar Nigam under JnNURM Project
- iv. Rehabilitation & Resettlement Implementation Programme under Uttarakhand State Roads Investment Programme
- v. Providing Social Mobilization Services for Facilitating Implementation of Activities by Communities for Participatory Watershed Development under Uttarakhand Watershed Development Unit (UWDU) - Integrated Livelihood Support Project (ILSP) Funded by International Fund for Agriculture Development (IFAD)

- vi. Providing Consultancy Services for Needs Assessment and Preparation of Detailed Project Reports (DPR) for Backward Panchayats and Revenue Deficient Municipalities in Kerala” under Kerala Local Government Service Delivery Project (KLGSDP) (World Bank Assisted Project)
- vii. Developing a Communication Strategy for Uttarakhand Water Supply & Sanitation Project for Peri-Urban Areas (World Bank Assisted Project)
- viii. Carryout Information Education & Communication (IEC) Activities and to Motivate Households to Connect with Sewer Network of various Districts of Uttar Pradesh

## 8. Monitoring, Evaluation, Impact Assessment

- i. Monitoring and Evaluation of the Schemes/Projects/Programmes of Ministry of Rural Development, Government of India being Implemented in various States (National Level Monitoring- NLM)
- ii. Independent Evaluation of Works Carried Out by Different Forest Divisions under State Forest Development Agency (SFDA)
- iii. Third Party Assessment, Evaluation, Documentation of Sericulture Projects Implemented under Catalytic Development Programme during 11<sup>th</sup> Plan in the State of Uttarakhand
- iv. Rapid Assessment of Impacts and Gap Identification in Catchment Area Treatment (CAT) Plan Implementation under Catchment Area of Concerned Hydro Power Projects in Uttarakhand
- v. Final Evaluation of Integrated Watershed Development Programme (IWDP) 2<sup>nd</sup> Batch and Draught Prone Area Programme (DPAP) 5<sup>th</sup> Batch in District Pithoragarh of Uttarakhand

## 9. Preparation of Micro Plans, Perspective Plans & DPRs

- i. Preparation of Micro Plans of 40 Villages affected by Srinagar Hydro - Electric Power Project under Srinagar Catchment Area Treatment (CAT) Plan
- ii. Preparation of Perspective Plans and Micro Plans under Green India Mission Project of Uttarakhand Forest Department for 10 Urban and Peri Urban Cities in Uttarakhand
- iii. Preparation of Micro Plans and Detailed Project Reports (DPRs) of 13 Villages affected by Vyasi Hydro-Electric Power Project under Vyasi Catchment Area Treatment (CAT) Plan
- iv. Preparation of People’s Biodiversity Register (PBR) and Bio-Cultural Community Protocol (PCB)

## 10. Educational Programmes

- i. Jan Sikshhan Sanstha (JSS) (Parent Organization HIFEED)
- ii. IGNOU HIFEED Community College
- iii. Study Centre of Uttarakhand Open University



Guest House, HIFEED Campus, Ranichauri, T.G.

## 11. Training Programmes

- i. Entrepreneurship Development Programme (EDP)
- ii. Training under Capacity Building for Adoption of Technology (CAT)
- iii. Primary Level Training (PLT) for Tribal Communities in the State of Uttarakhand
- iv. Training Programmes under Swarn Jayanti Shahari Rojgar Yojana (SJSRY) - STEP UP
- v. Training to Woolen Handloom Spinners and Weavers under Integrated Wool Improvement Programme, Common Facility-cum-Training Centre
- vi. Training Programme on Computer Application for the Youths Belongs to Tehri Dam Affected Villages in District Tehri Garhwal of Uttarakhand
- vii. Institutional Services for Training on Banking System and Micro Banking/Finance in District Tehri Garhwal and Almora of Uttarakhand
- viii. Leadership Development Training Programme at Shamli District of Uttar Pradesh under the Scheme for Leadership Development of Minority Women (Nai Roshni) - 1<sup>st</sup>
- ix. Leadership Development Training Programme at Shamli District of Uttar Pradesh under the Scheme for Leadership Development of Minority Women (Nai Roshni) - 2<sup>nd</sup>



- x. Training of Three Tier Panchayati Raj Representatives and Panchayat Functionaries under Rajiv Gandhi Panchayat Sashaktikaran Abhiyan
- xi. Design Workshop Training Programme (DWTP) on Woolen Craft for Skill Upgradation and Capacity Building of Tribal Beneficiaries
- xii. Rural Internship Programme
- xiii. Leadership Development Training Programme at Shamli District of Uttar Pradesh under the Scheme for Leadership Development of Minority Women (Nai Roshni) - 3<sup>rd</sup>

## **12. Cultural Programmes**

- i. Cultural Programmes- Garhwali Folk Songs and Dances
- ii. Late Keshav Anuragi and Kunwar Prasoon Smriti Samman Samaroh
- iii. Butter Festival
- iv. Garhwali 3D LED Fusion Concert
- v. Com. Kamla Ram Nautiyal Smriti Samman Samaroh
- vi. Training in Traditional and Folk Songs/Music and Dance in Tribal Areas of Chakrata and Kalsi Blocks of Dehradun District in the State of Uttarakhand under the Preservation and Development of Cultural Heritage of Himalayas

## **13. Meetings, Workshops & Seminars**

- i. Awareness Generation Programme (AGP)
- ii. Angora Wool Development Programme in Hill Areas of Uttarakhand: Scope & Opportunities
- iii. Orientation Workshop on Coordinated Programme for the Development of Angora Wool Sector in the State of Uttarakhand
- iv. Experience Sharing on Appropriate Technologies for Solid & Plastic Waste Management in Uttarakhand
- v. Scientific Explanation of So Called Superstition, Miracles, Tricks, etc.



**Production Unit, HIFEED Campus, Ranichauri, T.G.**

## **14. Other Activities**

- i. Yarn Depot
- ii. Crèche Programme for the Children of Working Mothers under Rajiv Gandhi National Crèche Scheme
- iii. Disaster Management Programme
- iv. Rural Internship Programme

## **BACKGROUND OF THE ORGANIZATION**

The entire Himalayan zone is considered to be a fragile zone which is very sensitive to frequent earthquakes, erosions, floods and other natural calamities which not only adversely alters the living, environment, ecology and economy. In Uttarakhand, Garhwal Himalayas in particular, we faced a man made tragedy of deforestation which led the women folk to come forward to protect its forest wealth which is now known as the "Chipko Movement".

The much talked man made Asia's largest "Tehri Dam" has posed many a problems before us, though there is debate among various environmentalists about its durability and longevity but definitely a number of villages have become marooned and a large number of people have been rehabilitated away from their original habitat.

Agriculture coupled with animal husbandry is the main stake of livelihood of hill people but the productivity so meagre that it can not cope up round the year need of the family. Not much has been done to improve the per unit productivity of the area because of lack of means of irrigation, fertile soil and use of improved varieties of food crops.

Women drudgery is another problem as not only the entire agricultural operations are in the hands of women but also rearing cattle and children. Because there are no nearby enterprises that could provide jobs therefore, the youths have migrated to big towns/cities in search of livelihood. There are no women friendly tools available or if available, they are not accessible to women. Cow dung is the main input used in agriculture but for lack of proper knowledge, the same is used in half decomposed condition which lead to women drudgery.

After analysing the ground realities of Himalayan region and with a aim to contribute something for the betterment of the area, **Himalayan Institute For Environment, Ecology & Development (HIFEED)** was conceived as a R&D based Civil Society Organization working for upliftment and sustainable development of mountain communities since 1995 without discrimination of race, caste, creed, sex, community and religion. The Organization is registered under the Societies Registration Act, 1860 dated 24.05.1995 having its registered office and Head Quarter at Ranichauri in District Tehri Garhwal in the State of Uttarakhand.

The Organization is set up by a team of experienced and eminent social scientists and professionals with a view to tap various aspects of development and research to unfold the hidden bottlenecks of strategies and policies although the original thrust of the Organization is to focus different innovative research and development activities. Working with the welfare of the community as well as to protect the environment and ecology of the area for more than two decades in the area, we thought to share our community based experience with other regions of the Country as a result now we have a presence in more than six States. HIFEED is also shouldering new roles, strategizing its new and old programmes of people's empowerment and also of their sensitization in changed contexts so as to maximize the gains in livelihood opportunities and minimize backlashes of this multipurpose project. We are here in Frazile Mountains, besieged with problems of out migration and poor economic growth and shocking downtrend in environmental elements of sustainability. Hence, we are here in the community with a vision, mission and objective of transformation for the betterment.

### **OUR BELIEF**

People are capable of transforming themselves and their environment with required concern for their local ecology. Human development particularly, while perusing economic growth does not necessarily degrades ecology and environment. But, instead good economic conditions and proper sensitive human development can also enhance the quality growth of the habitat and surroundings ecology and environment. The basic requirement is of providing to the people the appropriate technology with operational skill transfers. However, in skill transfers particularly in the case of mountains we would have to keep women in focus. We believe that poverty impacts human dignity and quality of life also. Hence we at HIFEED give utmost importance to economic empowerment. Good governance paves the way for sensitive transformation of societies and surroundings. Hence we are also opened to various partnerships with Government which helps in sustainable development of the locals. We also believe that any community, any area, or any Institutions like HIFEED can not live and grow in isolation. Hence we always strive for networking with Institutions of repute.

### **VISION & MISSION OF THE ORGANIZATION:**

The Vision of the Organization is that the Himalayan environment and ecology is maintained in such a way that the community is in a position to reap its beneficial effects in income supplementation. The Mission of the Organization is to assess a large number of people, empower them and build their capacity to run various income generation activities/enterprises for self-sustainability.

### **AIMS & OBJECTIVES OF THE ORGANIZATION**

The aims of the Organization is to serve the less privileged, downtrodden, less visible, under educated and marginalized people of the Himalayan region through multiple income and employment generation activities,

human resource development, research and development programmes for the betterment of their quality of lives, devising appropriate strategies and delivery systems for better and efficient resource usages.

The Objectives of the Organization is to empower the community in such a way that without harming the environment and ecology they could maintain their livelihood by contineuing and fine tuning their traditional practices.

### **APPROACH & STRATEGY OF THE ORGANIZATION:**

#### **We believe in:**

- i.** Bottom up approach
- ii.** Need based approach
- iii.** Participatory approach
- iv.** Participatory Planning
- v.** Concurrent monitoring

Our strategy is to work with community on projects designed on people's felt need with relevant skills set of its implementers. The approach to Donors for the projects and programmes is in accordance with HIFEED's objectives, vision and mission and according to the need of the community/society. People are motivated and their commitment is sought for being in transparent and dignified partnership in planning, implementing and monitoring of the projects. Cooperation from the experts from various Government Departments/Institutions, Research Institutions, Non-Governmental Organizations, International Organizations/Agencies would be valued and would be accessed for a time bond attainment of the project in a transparent and sustainable way. Towards this, regular training programmes and imparting of relevant skill sets to community and in house staff of HIFEED is to be done.



**HIFEED Campus, Ranichauri, T.G.**

Cooperation from the experts from various Government Departments/Institutions, Research Institutions, Non-Governmental Organizations, International Organizations/Agencies would be valued and would be accessed for a time bond attainment of the project in a transparent and sustainable way. Towards this, regular training programmes and imparting of relevant skill sets to community and in house staff of HIFEED is to be done.

### **WORKING AREA OF THE ORGANIZATION**

Initially we started working for the hilly areas of Uttarakhand but with a span of time and experience, our Organization grew and got empaneled under various programmes of Government of India and State Governments and also we developed our capacity and capability to compete with open ended projects, programmes and assignments. As a result, we have made our presence in various States like Uttar Pradesh, Bihar, Jammu & Kashmir, Himachal Pradesh, Rajasthan, Kerala, etc. and carried out different assignments like monitoring & evaluation, baseline survey & studies, impact assessment, need assessment, micro planning, preparation of detailed project reports, IEC activities, etc.

### **SERVICES PROVIDED BY THE ORGANIZATION**

HIFEED have wide ranging experience in undertaking studies involving the various research methods with core competencies in multiple niches in each of the following areas i.e. Rural Development, Urban Development, Tribal Development, Health and Family Welfare, Labour and Employment, Empowerment of Women, Micro Credit and Micro Enterprise Development, Formal and Non-Formal Education, Child Rights, Good Governance, Social Justice, Poverty Alleviation, Livelihood Promotion, Food Security, Minority Affairs, Agriculture and Horticulture Development, Ecology and Environment, Rehabilitation and Re-settlement, Institutional Design and Change Management, Entrepreneurship Development, etc.

HIFEED has laid substantial emphasis on need for conducting research, participatory monitoring, evaluations, impact assessment, need assessment, training and capacity building and institutional assessments etc. of development initiatives by NGOs. These exercises facilitate in assessing the results achieved, process of development undertaken, utilization of resources and the levels of capacity with a view to draw learning's and enhance efficiency and effectiveness. Ours team of professionals provide long-term as well as short-term management support services to development initiatives. We specialize in the creation of multi-disciplinary teams where the domain perspective and the management support capabilities provided by HIFEED. The teams are capable of addressing and resolving an assortment of needs.



We work in the management support areas of strategic planning, human resource and organizational development, research, monitoring and evaluation, capacity building and facilitation, financial management and documentation, etc. We have proven capacities of providing management support services within the social sector. We undertake large and small research projects such as mapping risk, situational needs assessments, social assessments, etc. We develop and implement monitoring, evaluation and learning systems for projects and programmes. In addition, we possess expertise and experience in pre-funding, mid-term, and end-project appraisals. We also develop and conduct training modules in domain and management related areas in which we work. We have developed and continue to develop standards and indices to measure the health of Organization.

HIFEED professionals have extensively conducted the exercises for international agencies, national level, intermediary level and grass-root NGOs. HIFEED specializes in conducting participatory need assessments by eliciting perceptions and opinions from various stakeholders including the target group. This exercise facilitates in identification of actual needs of the community and target groups and also those spheres of their lives where support of an external agency is required to make a holistic and realistic intervention.

HIFEED believes that for holistic understanding of an issue or an area, both qualitative and quantitative data are required. The study on any issue is strengthened when both qualitative and quantitative information are used in conjunction with one another. Thus, baseline surveys and PRA are complementary to each other. A survey tool is devised and similarly PRA techniques are selected on the basis of the objectives of the assignment. Facilitation for designing and conducting baseline surveys and PRA has been framed on the issues related to health, poverty, natural disaster, social and family problems, problems in governance, income generation skills, usefulness of infrastructure, etc. Besides, PRA techniques are also widely used in participatory evaluations and during strategic planning for NGOs.



**Common Facility Center, HIFEED Campus, Ranichauri, T.G.**

HIFEED conducts both participatory mid-term and end line evaluations involving all major stakeholders viz. Institution's leadership, functionaries, beneficiaries, non-beneficiaries and agencies linked with. Perceptions from all these enable to ascertain the accomplishments, non-accomplishments and the overall impact of the development intervention. The evaluations also make use of the Process Evaluation Research Technique.

HIFEED believes that monitoring leads to greater degree of awareness of results and constant improvement through efficient and effective use of resources and ultimately in fostering the sense of responsibility amongst the people. For effective monitoring a system must be built into the programme design and management plan and should provide continuous feedback on an ongoing basis. More significantly, it must actively involve the implementers as well as programme participants in measuring, recording, collecting, processing and analyzing information. The role of the outside facilitator should be not only to carry out periodic monitoring exercise but also facilitate the evolving of need based systems and change of strategy for effective programme implementation. This necessitates that the system be need based and simple, and keeping in view the ability of programme participants to use it. HIFEED's team of professionals has in-depth domain expertise, which has helped in strategic planning at various levels. We work in tandem with the various stakeholders in preparing, crystallizing and operationalizing development plans, be it for the community, district, state or the nation. Our strength lies in judicious application of the above methods and an evolving analysis plan that befits different situation. Our clients in the past will vouch for this self-assessment.

#### **EMPANELMENT WITH VARIOUS MINISTRIES/DEPARTMENTS/AGENCIES (PRESENT & PAST)**

- The Organization is empaneled as a National Level Monitor (NLM) with the Ministry of Rural Development (MoRD), Government of India for Monitoring the Programmes of Ministry Vide Letter No. Q11019/36/2010-AI (NLM) Dated 9<sup>th</sup> December, 2011.

Under the Assignment, the Organization is Monitoring the Schemes of Ministry of Rural Development (MoRD), Government of India in different States i.e. **(i)** Mahatma Gandhi National Rural Employment Guarantee Scheme (MGNREGA), **(ii)** National Rural Livelihood Mission (NRLM), **(iii)** Aajeevika Skills, **(iv)** Indira Awas Yojna (IAY), **(v)** National Security Assistance Programme (NSAP), **(vi)** Integrated Watershed Management Programme (IWMP), **(vii)** National Rural Drinking Water Programme (NRDWP) and **(viii)** Nirmal Bharat Abhiyan (NBA).

- The Organization is empaneled as a National Resource Institutions (NRI) with the Ministry of Housing & Urban Poverty Alleviation (MoHUPA), Government of India for the National Programmes Including Jawaharlal Nehru National Urban Renewal Mission (JNNURM), Rajiv Awas Yojana (RAY) and Other Externally Aided Programmes of the Ministry for Eight North Indian States of the Country Vide Letter No. 11027/49/2010-Ray Dated 4<sup>th</sup> November, 2011. The States allotted are: **1.**Uttarakhand, **2.**Uttar Pradesh, **3.**Himachal Pradesh, **4.**Punjab, **5.**Haryana, **6.** Jammu & Kashmir, **7.**Delhi and **8.**Chandigarh. Under the NRI, Social Development and Community Mobilization Activities Includes:
- The Organization is empaneled as a Resource Institutions (RI) with the Small Farmer's Agribusiness Consortium (SFAC), Department of Agriculture and Cooperation, Government of India for Promoting Farmer Producer Organization (FPOs) for the States of **1.**New Delhi, **2.**Uttarakhand and **3.**Uttar Pradesh Vide Letter No. SFAC/13/20/2013/1603 Dated 25<sup>th</sup> July, 2013.
- The Organization is empaneled as a Training and Capacity Building Agency with the Watershed Management Directorate, Government of Uttarakhand, Dehradun under Integrated Watershed Management Programmes in the State of Uttarakhand vide letter No. 1273/1-2/SLNA dated 29<sup>th</sup> December 2012
- The Organization is empaneled as a Monitoring & Evaluation Agency with the Principal Chief Conservator of Forest, Van Panchayat and JICA, Department of Forest, Government of Uttarakhand, Dehradun for independent evaluation of works carried out by different Forest Divisions under State Forest Development Agency (SFDA) vide letter No. 325/18-6 dated 25<sup>th</sup> October 2012, letter No. 218/18-6 dated 21<sup>st</sup> September 2013, letter No. 219/18-6 dated 21<sup>st</sup> September 2013 and letter No. 603 (d)/3-6 dated 16<sup>th</sup> June 2015
- The Organization is empaneled as a Vocational Training Institute with Uttarakhand Skill Development Mission (UKSDM), Government of Uttarakhand, Dehradun
- The Organization is empaneled as a Vocational Training Institute with State Urban Development Agency (SUDA), Department of Urban Development, Government of Uttarakhand, Dehradun vide letter No. 376/SUDA/NULM/Utthan-13/2014-15 dated 18<sup>th</sup> December 2014 The Organization is empaneled as Monitoring, Study and Survey Agency with the Directorate of Economics & Statistics, Government of Uttarakhand, Dehradun vide letter No. 2405/98/13<sup>th</sup> Finance/2014-15 dated 13<sup>th</sup> February 2015
- The Organization is empaneled as Training Agency with Panchayati Raj Directorate, Government of Uttarakhand, Dehradun for Training of Panchayati Raj Representatives and Functionaries vide letter No. 456/P2/Accounts/Training/2016-17 dated 6<sup>th</sup> June 2016
- The Organization is empaneled as Evaluation Agency with Uttarakhand Institute of Rural Development & Panchayati Raj (UIRD&PR), Government of Uttarakhand, Rudrapur, Udham Singh Nagar for Evaluation of Watershed Development Projects vide letter No. 543/5-22/Evaluation/2016-17 dated 24<sup>th</sup> August 2016



**Jan Shikshan Sansthan, HIFEED Campus, Ranichauri, T.G.**

- The Organization is empaneled as Technical Support Group with Uttarakhand Biodiversity Board (UBB), Government of Uttarakhand, Dehradun for preparation of People's Biodiversity Register (PBR) and Bio Cultural Community Protocol (PCB) vide letter No. 639/5-3 (5)/II/ dated 7<sup>th</sup> December 2016
- The Organization is empaneled as Research, Monitoring and Evaluation Agency with State Innovations in Family Planning Services Agency (SIFPSA), Government of Uttar Pradesh, Lucknow for research, monitoring and evaluation of National Health Mission (NMH)/SIFPSA projects vide letter No. 04/SIFPSA/REMI/Emp./7278 dated 2<sup>nd</sup> February 2017
- The Organization is empaneled as Resource & Support Organization (RSO) and Research and Resource Organization (RRO) with National CSR Hub and accredited for thematic and geographic competency and credibility by the Tata Institute of Social Sciences (TISS), Mumbai vide letter No. B/1/16/10/879 dated 2<sup>nd</sup> March 2017
- The Organization is empaneled as Information, Education & Communication (IEC) Agency with State Project Management Group (SPMG), Namami Gange Programme, National Ganga River Basin Authority, Uttarakhand, Dehradun to undertake various IEC activities, workshops, trainings, advertisement & publicity, production of audio-visual documentary, designing & printing of IEC material, etc. vide letter No. 858/SPMG/PA/136 dated 22<sup>nd</sup> June 2017
- The Organization is empaneled as a Resource Institutions (RI) with the Ministry of Women & Child Development (MWCD), Government of India, New Delhi for Imparting Training Programmes/ Workshop under Sexual Harassment of Women at Workplace (Prevention, Prohibition and Redressal) Act 2013 vide Notification dated 27<sup>th</sup> October 2017
- The Organization is empaneled as Information, Education & Communication (IEC) Agency with State Project Management Group (SPMG), Namami Gange Programme, U.P.State Ganga River Conservation Agency, Urban Development Department, Government of Uttar Pradesh, Lucknow to Carryout IEC Activities and to Motivate House holds to Connect with Sewer Network of various Districts of Uttar Pradesh vide letter No. 960/SGRCA/0304C/06 dated 14<sup>th</sup> November 2017
- The Organization is empaneled as Monitoring, Study and Survey Agency under SSS and other Programmes with the Directorate of Economics & Statistics, Government of Uttarakhand, Dehradun vide letter No. 1890/211/SSS/Empanel/2018-19 dated 21<sup>st</sup> December 2018
- The Organization is empaneled as Training Agency with Panchayati Raj Directorate, Government of Uttarakhand, Dehradun to provide Capacity Development Training to Panchayati Raj Representatives and Panchayat Functionaries vide letter No. 25-75/P- 2/Lekha/Nivida/2018-19 dated 15<sup>th</sup> February 2019
- The Organization is empaneled as Implementation Support Agency with State Water & Sanitation Mission, Department of Drinking Water & Sanitation, Government of Uttarakhand, Dehradun, Uttarakhand to work under Jal Jeevan Mission (JJM) vide letter No. 24/N- 574/2020-21 dated 24<sup>th</sup> April 2020
- The Organization is empaneled as a Community Based Business Organization (CBBO) with the Small Farmer's Agribusiness Consortium (SFAC), Department of Agriculture, Cooperation & Farmer's Welfare (DAC&FW), Government of India, New Delhi for formation and promotion of Farmer Producer Organizations (FPOs) under Central Sector Scheme for formation and promotion of 10,000 FPOs vide letter No. SFAC/FPO/CBBOs/EOI/2020-21/2033 dated 18<sup>th</sup> January 2021

## **HIFEED, A CENTRE OF EXCELLENCE**

Government of Uttarakhand recognized the HIFEED as a **"Centre of Excellence"** vide G.O. No. 627/FRDC/2003-04 dated 5<sup>th</sup> July 2003 to plan, formulate, implement development projects and conduct research & development activities and trainings at State level.

## **ISO CERTIFICATION**

HIFEED is an ISO 9001:2008/9001:2015 Certified Organization for Quality Management System Standard Vide:



- Certificate No. I/QSC- 1562 Dated 25<sup>th</sup> March, 2010 by the Norsk Akkreditering of Norway
- Certificate No. 140303XXXX06 Dated 3<sup>rd</sup> March, 2014 by the TNV Certification Pvt. Ltd. Accredited by Joint Accreditation System of Australia and New Zealand.
- Certificate No. Q-RS-1703-1775 dated 27<sup>th</sup> March 2017 by the Royal Stancert Inc. Germany accredited by Global Euro Accreditation Centre, Georgia, USA.

#### **PUBLICATIONS OF THE ORGANIZATION**

1. Angora Rabbit: Management and Medicine
2. Uttaranchal ke Parvatiya Chhetron mein Angora Khargosh Palan
3. Parvatiya Chhetron mein Oon Utpadan hetu Angora Khargosh Paalan
4. Angora Wool Development Programme in Hill Areas of Uttaranchal: Scope & Opportunities
5. Chara Utpadan
6. Pashu Prajanan
7. Pashu Poshan
8. Pashu Swasthya Prabandhan
9. Sabjiyon ki Sanrakshit Kheti
10. Parvatiya Chhetron Mein Sanrakshit Taknik ke Madhyam se Sabjiyon ka Utpadan
11. Operational Manual for Multi-Parameter Field Water Testing Kit
12. Bemausami Sabji Utpadan hetu Sanrakshit Takniki ka Prayog
13. Bhed Poshan
14. Bhed Unnayan
15. Bharat mein Bakri ki Naslen



**HIFEED Admin Office, Dehradun**

#### **MANAGEMENT COMMITTEES OF HIFEED**

1. Board of Management/Governing Board
2. Executive Committee/Management Committee
3. Programme Advisory Committee
4. Monitoring & Evaluation Committee
5. Vigilance & Grievances Committee
6. Staff Selection Committee
7. Staff Welfare Committee
8. Purchase Committee
9. Award and Rewards Committee
10. Committee for Value Assessment of Defected Items
11. Right to Information Cell
12. Gender Equity Cell
13. Inter State Programmes Unit



**Knitting Training, HIFEED Campus, Ranichauri, T.G.**

#### **DEPARTMENTS & SECTIONS OF HIFEED**

1. Administrative & Accounts Department
2. Personnel & Human Resource Department
3. Public Relation Department
4. Training & Extension Department
5. Livelihood Promotion Department
6. Production & Marketing Department
7. Textile/Fashion Designing & Natural Dyeing Department
8. Monitoring & Evaluation Department

9. Solid, Liquid & Plastic Waste Management Department
10. Research & Development Department
11. Agriculture, Horticulture & Vegetable Science Department
12. Health Education & HIV/AIDS Awareness Department
13. Animal Husbandry and Dairy Development Department
14. Natural Resource Management Department
15. Water and Sanitation Department
16. Eco Tourism & Village Tourism Department
17. Project Consultancy Cell
18. Jan Shikshan Sansthan (JSS)

### THRUST AREAS OF HIFEED FOR IMPLEMENTATION OF PROJECTS

1. Environment and Ecology
2. Agriculture and Horticulture Development
3. Animal Husbandry and Dairy Development
4. Health Education and HIV/AIDS
5. Women Empowerment and Child Development
6. Solid, Liquid & Plastic Waste Management
7. Technology Development and Dissemination
8. Natural Resource Management
9. Vocational Education and Training
10. Livelihood Promotion and Income & Employment Generation
11. Research and Development
12. Human Resource Development
13. Water and Sanitation
14. Eco Tourism, Rural Tourism & Village Tourism
15. Welfare of Orphans, Senior Citizens, etc.



Legal Literacy Camp, HIFEED Campus, Ranichauri, T.G.

### AREA OF SPECIALIZATION AND EXPERTISE OF HIFEED

1. Monitoring and Evaluation
2. Baseline Survey and Studies
3. Socio-Economic Studies
4. Impact Assessment Studies
5. Need Assessment Studies
6. Social Auditing
7. Training and Capacity Building
8. Designing and Organizing Research Studies
9. Formulation of Projects and Developing Proposals
10. Developing Concept and Strategy Papers
11. Public Opinion and Perception Studies
12. Rehabilitation and Resettlement
13. Customer Satisfaction Survey
14. Institutional Design and Development
15. Organizing Meetings, Workshops, Seminars and Conferences
16. Facilitation of Human Resource Development Systems and Procedures
17. Statistical Analysis Techniques, Data Entry and Analysis
18. Qualitative and Quantitative Research Methodology
19. Film and Documentary Production
20. Event Organizing and Management
21. Project Consultancy Services
22. Project Planning and Implementation



Training Program, Jan Sikshan Sansthan, T.G.



**JAN SHIKSHAN SANSTHAN (JSS) PARENT ORGANIZATION HIFEED  
(INSTITUTE OF PEOPLE'S EDUCATION)  
A CONTINUING EDUCATION AND VOCATIONAL TRAINING INSTITUTE SPONSORED BY  
MINISTRY OF SKILL DEVELOPMENT AND ENTREPRENEURSHIP, GOVERNMENT OF INDIA**

### BACKGROUND OF THE PROJECT

Jan Shikshan Sansthan (JSS) formerly known as Shramik Vidya Peeth (SVP) was one of the popular and polyvalent schemes in non-formal education sector crafted by the then Ministry of Education and culture, Government of India. Initially the focus of scheme was to cater the needs of the industrial workers and urban slum dwellers. Polyvalency of the SVP scheme means that SVP programmes were designed to cater to vocationalcum general education needs of the target group. The polyvalent (multifaceted) approach to adult education of workers represents an attempt provides knowledge and imparts skills simultaneously and in an integrated manner.

The first Shramik Vidya Peeth was established in Mumbai (Worli) in March 1967 and was commissioned by the Bombay City Social Education Committee, a voluntary organization engaged in the field of Adult Education for several years. After the success of the project, the Govt. of India developed a scheme for setting up a network of Shramik Vidya Peeths in the country in a phased manner. For establishment of more such institutions specific provisions have been made in the plan and it was envisaged that this programme will be extended to all the states and UTs.

With the emergence of millions of neo-literates through the Total Literacy Campaigns launched across the length and breadth of the country and the transformation that has taken place in the economic and social set up over the years, the role and scope of these polyvalent educational institutions have widened manifold. In the changed scenario, the focus of Shramik Vidya Peeth (SVP) was shifted from industrial workers in urban areas to the numerous neo-literates and unskilled and unemployed youth throughout the country especially underprivileged people in the rural areas. The SVPs were accordingly renamed as Jan Shikshan Sansthan (JSS) w.e.f. 2000. It concentrates on the socio-economically backward and educationally disadvantaged groups of urban/rural population such as neo-literates, semi-literates, SC, STs, women and girls, slum dwellers, migrant workers. Etc. Now these Sansthan act as district level resource support agencies especially in regard to organization of vocational training and skill development programmes for the neo-literates and other target groups of the continuing education programme.

The number of SVPs/JSSs gradually increased to 17 up to 1983 to 40 in 1986 and to 58 by end of 8<sup>th</sup> five year plan i.e. 1996-97, The number increased to 108 by the end of 9<sup>th</sup> Plan (2001 -02), 198 by the end of 10<sup>th</sup> Plan (2006-07) and 271 upto 2008 -09 during the 11<sup>th</sup> Plan period and covering 27 states and 02 UTs.

The JSSs are functioning under the NGOs with annual lump-sum grant from the Govt. of India. The administrative and financial affairs of the JSSs are managed by the respective Boards of Management. In order to enjoy a considerable degree of autonomy, these institutes are required to be registered under the Societies Registration Act 1860 with their own Memorandum of Association, Rules and Regulations.

The first review of the experimental SVP at Bombay was conducted in 1969 by Dr. M.S. Gore of the Tata Institute of Social Sciences. The review emphasized the need for systematic preparation of Syllabi and training materials as well as proper selection of participants in each programme. It further recommended that

*Hifeed, A Mission for Upliftment of the Nation*



**Training Program, Jan Shikshan Sansthan, T.G.**



**Training Program on Cutting & Sewing, J.S.S., T.G.**



educational needs of the learners be assessed and experienced educationists and experts associated with developing courses and materials. The second review of SVP, Bombay was again done by Dr. M.S. Gore and Mr. P.K. Muttagi of the Tata Institute of Social Sciences. The Ministry of Education set up a review committee in 1976 under the Chairmanship of Mr. Anil Bordia to make a comprehensive review of SVPs. The committee reported that programmes were not based on identified needs; pedagogical methods were not satisfactory and lack of resource support to SVPs. In 1986, a review study of SVPs commissioned by the Government of India to Dr. Prayag Mehta once again reported that "the thrust for quantitative targets resulted in a competitive game of numbers. This was done largely at the cost of the stated objectives. Functions such as identification of needs, programme planning, course development, integrated educational approach, training preparation of materials and promotion of linkages got largely side tracked. The quality was the inevitable casualty in the process." The scheme was

once again reviewed by Dr. Jacob Aikara to Tata Institute of Social Sciences in 1993 and the Indian Institute of Management, Bangalore (IIM-B) in 2008. IIM Bangalore recommended that the Scheme of JSS is a laudable one and very well conceived. It is undoubtedly a time-tested and prestigious scheme which has proven its worthiness in the field. Its overall success has generated a great demand for the Scheme. In this light, it is strongly recommended that the Scheme must be continued.

The scheme of JSS was again reviewed by Indian Institute of Management (IIM) Lucknow in 2014 and based on the findings and growing demand for vocational education in the country they recommended continuation of the programme.



**Training Program on Hotel Management J.S.S., T.G.**

The scheme of support to voluntary agencies for Adult Education and skill development was again reviewed by Center for Market Research and Social Development, New Delhi in 2017 and recommended that JSSs need to be upgraded in terms of infrastructure, course curriculum need to be upgraded as per NSQF compliant, linkages with industries for placement, recognition of certificate and JSS component may be treated as Special Purpose Vehicle under Ministry of Skill Development and Entrepreneurship which exclusively looks after skill development in the country.

Hon'ble Prime Minister of India has launched the National Skill Development mission on 15.07.2015 on the occasion of World Youth Skills Day. The Mission has been developed to create convergence across sectors and states in terms of skill training activities. Further, to achieve the vision of "Skilled India" the National Skill Development Mission would not only consolidate and coordinate skilling efforts, but also expedite decision making across sectors to achieve skilling at scale with speed and standards.

Ministry of Skill Development and Entrepreneurship (MSDE) will streamlined the institutional mechanism in the implementation of skill development programmes in the country. The vision, objectives and design of the Mission, draw on the lessons learnt from the implementation of skill development efforts over the past decade. It seeks to provide the institutional capacity to train a minimum of 300 million skilled people by the year 2022. The Ministry of Finance, Department of Expenditure vide their O.M dated 02.12.2016 instructed the ministry of Human Resource Development that the Vocational Education component of Adult Education Scheme should be carried out within the Pradhan Mantri Kaushal Vikas Yojana.



**Training Program, J.S.S., T.G.**

Consequently the Jan Shikshan Sansthan component of Scheme of Support to Voluntary Agencies for Adult Education has been transferred from Ministry of Human Resource Development to Ministry of Skill Development and Entrepreneurship on 2<sup>nd</sup> July, 2018.

The guidelines for implementation of the Scheme of Jan Shikshan Sansthan were developed by Ministry of Human Resource Development in theyear 2000 based on the changing scenario in the literacy programmes.

There is a need to revise the guidelines of the Jan Shikshan Sansthan in view of the goals of skill India and objective of the Ministry of Skill Development and Entrepreneurship. In this context, a committee has been constituted to revamping and restructuring of the Jan Shikshan Sansthan under Ministry of Skill Development and Entrepreneurship.

## OBJECTIVES

- To improve the occupational skills and technical knowledge of the non/neo-literates and persons having rudimentary level of education upto 8<sup>th</sup> standard and other school dropouts beyond 8<sup>th</sup> standard i.e. upto class 12<sup>th</sup> to raise their efficiency, increase productive ability and enhance their livelihood opportunities.
- To identify and promote traditional skills in the district through skilling/up skilling.
- To create a pool of master trainers working across the department/agencies of skill development through training/orientation programme.
- To collaborate and coordinate with other departments/agencies working in the field of skill development.
- To widen the range of knowledge and understanding of the social, economic and political systems and create awareness about the environment.
- To promote national values and to align with national programmes.
- To promote self - employment and facilitate to get financial support including loans/for the target group through linkage with credit and consortium membership.



Training Program, J.S.S., T.G.



Beautician Training Program, J.S.S., T.G.

## COMPONENTS

- Identify appropriate target areas and groups by developing socio-economic profiles.
- Identify and ascertain educational and vocational needs of different categories of clientele groups.
- Explore, innovate, work out alternatives and try new methodologies to meet the need of different groups through programmes of vocational education and trainings.
- Cooperate with educational, cultural and social organizations involved in organizing programmes and activities to meet educational, vocational, social, cultural and welfare needs of target groups.



Mushroom Cultivation Training Program, J.S.S., T.G.



- Act as a coordinator, facilitator and catalytic agent by developing a system of net - working in collaboration with other vocational and technical institutions, development departments, welfare agencies, employers and workers' organizations, voluntary agencies, economic enterprises etc.
- Undertake training and orientation of resource persons/instructors involved in planning and implementation of various programmes.
- Provide consultancy services to agencies and enterprises planning to organize programmes for training and vocational education of similar target groups.
- Organize vocational training programmes with special concern for deprived sections, women/girls and unemployed youth to provide new skills, refine/sharpen/upgrade the existing livelihood skills for employment, self-employment and income generation.



Training Program, J.S.S., T.G.

- Promote organization of forums such as co-operative societies, mandals and associations of women, youth and workers with a view to undertake collective activity for socio- economic development.
- Provide follow- up services to beneficiaries of the JSS.
- Create livelihood cell for employment/self and wage employment opportunities. Livelihood cell will be linked with appropriate national/state level portal for promotion of livelihood opportunities.
- Identify and develop curriculum on local traditional skills.



Computer Training Program, J.S.S., T.G.

### TARGET AREA AND TARGET GROUPS

- The target area of the project is limited to District Tehri Garhwal of Uttarakhand.
- Jan Shikshan Sansthan will concentrate on the socio-economically backward and educationally disadvantaged groups of urban/rural population such as men, women and youth, employed, self-employed, neo literates, prospective workers and their family members as well as unemployed youth.
- The main target of the JSS is to impart vocational skills to the non-literates, neo literates and the person having rudimentary level of education upto 8<sup>th</sup> standard and other school dropout beyond 8<sup>th</sup> standard i.e. upto class 12<sup>th</sup> in the age group of 15-35 years. Age limit could be relaxed in case of "Divyang" and other deserving cases.



Handicraft Exhibition, J.S.S., T.G.

- Priority is to be given to Women, SC, ST, OBC and Minorities in the rural areas and urban slums.

### FUNDING AGENCY

The Project is funded by the Ministry of Skill Development & Entrepreneurship, Government of India, New Delhi.



**JAN SHIKSHAN SANSTHAN (JSS)  
HIGHLIGHTS 2020-21**

**1. VOCATIONAL COURSES ORGANIZED**

S.N.	Name of the Courses	No. of Batches	Total No. of Beneficiaries
1.	Assistant Hair Stylist	05	100
2.	Domestic Data Entry Operator	05	100
3.	Self Employed Tailor	06	120
4.	Assistant Carpenter Wooden Furniture	02	40
5.	Front Line Health Worker	03	60
6.	Hand Operated Knitting Machine Operator (Circular & Flat)	05	100
7.	Plumbing General (Assistant)	04	80
8.	Traditional Hand Embroidery	07	140
9.	Mushroom Grower (Small Entrepreneur)	04	80
10.	Dairy Farmer/Entrepreneur	04	80
11.	Pickle Making Technician	06	120
12.	Service Technician Home Appliance	05	100
13.	Unarmed Security Guard	01	20
14.	Room Attendant	01	20
15.	Hand Made Bamboo Agarbatti Stick	08	160
16.	Bamboo Basket Maker	04	80
17.	Hand Spinning Operator (Charkha)	01	20
	<b>Total</b>	<b>71</b>	<b>1420</b>

**2. ACTIVITIES ORGANIZED**

S.N.	Name of Activity	Duration/Date	Place	Name of the Collaborating Agency, If Any
1.	Yoga Day	21.06.2020	HIFEED Campus, Ranichauri	HIFEED, Ranichauri
2.	World Youth Day	15.07.2020	Kanda Khal, Pratap Nagar	JSS Center, Kanda Khal, Pratap Nagar
3.	Kauslacharaya Award	10.09.2020	HIFEED Campus, Ranichauri	HIFEED, Ranichauri
4.	Gandhi Jayanti	02.10.2020	Natural Food Technology, Chamba	Natural Food Technology, Chamba
5.	World Unity Day	31.10.2020	Chopidiyal Gaon, Vision Institute, Chamba	Chopidiyal Gaon, Vision Institute, Chamba
6.	International Women's Day	08.03.2021	Vision Institute, Chamba	Vision Institute, Chamba
7.	Capacity Building Programme	07.12.2020 to 10.12.2020	Natural Food Technology, Chamba	Natural Food Technology, Chamba

**UPGRADATION OF GOVERNMENT INDUSTRIAL TRAINING INSTITUTE (ITI)  
THROUGH PUBLIC PRIVATE PARTNERSHIP (PPP) MODE  
(INDUSTRY PARTNER HIFEED)**

**BACKGROUND OF THE PROJECT**

India is a fast growing economy with a rising demand for skilled workforce which enhances the efficiency and flexibility of the labour market, reduces skills bottlenecks, and improves mobility and productivity. The Directorate General of Employment & Training (DGE&T), Government of India initiated Craftsman Training Scheme in 1950 by establishing 50 Industrial Training Institutes (ITIs) for imparting skills in various vocational trades to meet the manpower requirements for technology and industrial growth of the Country.

The demand for skilled manpower has increased substantially due to rapid economic growth, changes in technology and work process, and globalization of economy. As on 01.01.2007 there were 1896 Government ITIs in the Country. Out of these 500 ITIs are being upgraded into "Centers of Excellence" under ascheme started from 2005-06.The Upgradation of the remaining 1396 Governmentitit is started in 2007-08 through Public Private Partnership (PPP) mode.

**OBJECTIVE OF THE PROJECT**

The objective of the scheme is to improve the quality of vocational training and make it demand driven so as to ensure better employability of the graduates.

**SALIENT FEATURES OF THE PROJECT**

For the ITI to be taken up under the scheme, an Industry Partner (HIFEED) is associated to lead the process of upgradation. An Institute Management Committee (IMC), headed by the Industry Partner (HIFEED), is constituted and registered as a Society. A Memo randum of Agreement is signed among the Central Government, the State Government and the Industry Partner (HIFEED) defining the roles and responsibilities of all the parties. An interest free loan up to Rs. 2.5 crores is given by the Central Government directly to the IMC on the basis of Institute Development Plan (IDP) prepared by it. For the repayment of loan, there is a moratorium of ten years from the year in which the loan is released to the IMC. After the moratorium, the loan is payable by the IMC in equal annual instalments over a period of twenty years.

Under this scheme the IMC has been given financial and academic autonomy to manage the affairs of the ITI. The IMC is allowed to determine up to 20% of the admission in the ITI. The Industry Partner (HIFEED) may provide financial assistance as well as machinery and equipment to the ITI. It shall arrange to provide training to instructors and on the job training to trainees.



**Industrial Training Program**



**Industrial Training Program**



**Industrial Training Program**



**Industrial Training Program**



**BRIEF ABOUT THE INSTITUTE (GITI)**

S.N.	Particulars	Details
1.	<b>Name &amp; Address of ITI</b>	GITI, Baurari, New Tehri, District- Tehri Garhwal, Uttarakhand
	Phone No.	(01376) 232352
	E-mail	iti.baurari.ppp@gmail.com
	Year of Establishment	1950
2.	<b>Industry Partner</b>	Himalayan Institute For Environment, Ecology & Development (HIFEED)
	<b>Address</b>	HIFEED Campus, Ranichauri- 249199, District- Tehri Garhwal, Uttarakhand
	Phone No.	(01376) 252149
	E-Mail	hifeeduttaranchal@gmail.com
	Website	www.hifeed.org
3.	<b>IMC Chairman</b>	Dr. Kamal Bahuguna
	Designation	Executive Director, HIFEED
	Address	HIFEED, Street No. 4, Shastri Nagar, Haridwar Road, Dehradun- 248001, Uttarakhand
	Phone No.	(0135) 2666865
	Mobile No.	9412984030
	E-Mail	drkamalbahuguna@gmail.com
4.	<b>Existing Trades</b>	
	Intake Capacity Present Strength	Intake Capacity- 144 Present Strength- 73
	Upgradation of Existing Trades	1. Copa 2. Basic Cosmetology

**UPGRADATION OF GOVERNMENT INDUSTRIAL TRAINING INSTITUTE (ITI)  
HIGHLIGHTS 2020-21**

**Detail of Trainees during the Year 2020-21**

S.N.	Name of Trade	No. of Students Got Admission	No. of Students Admitted in Exam	No. of Students Qualified Exam during the Year
1.	Computer Operator & Programming Assistant (COPA)	48	45	45
2.	Hair & Skin Care (Basic Cosmetology)	25	20	18

**Detail of Employees of the ITI during the Year 2020-21**

S.N.	Designation	Nos.
1.	Principal	01
2.	Forman	01
3.	Instructor	03
4.	Store Keeper	01
5.	U.D.C	01
6.	L.D.C.	01
7.	Peon	02
8.	Watchman	02
9.	Attendant	01
10.	Sweeper	01
	<b>Total</b>	<b>14</b>



**CARRYOUT INFORMATION EDUCATION & COMMUNICATION (IEC) ACTIVITIES AND TO MOTIVATE HOUSEHOLDS TO CONNECT WITH SEWER NETWORK IN MUZAFFAR NAGAR, MEERUT, GHAZIABAD AND LONI ULBS OF UTTAR PRADESH**

**BACKGROUND OF THE PROJECT**

The Namami Gange Programme is responsible for planning, financing, monitoring and co-ordination of activities for effective abatement of pollution and conservation of the river Ganga. At the State level U.P. State Ganga River Conservation Agency (UPSGRCA) has been set up as State Project Management Group (SPMG) under the Department of Urban Development, Government of Uttar Pradesh to co-ordinate and implement the various activities of the Namami Gange Programme at State level including those supported under the World Bank assisted projects.

Under the Namami Gange Programme, the State Programme Management Group has decided to further strengthen the management of sewer networks of various cities of the State where household connections has not been provided in sewer network laid down, even if provided only the effluent of septic tank is being captured in sewer network whereas sewage in household is generated in toilet, bathroom and kitchen. Waste water from all these three sources can be taken to the sewer. To achieve this challenging task an extensive social intermediation and outreach campaign for behaviour change is required to create awareness and motivate people to come forward for household connections to sewer network of the said districts.



Meeting Under Namami Gange Program

**OBJECTIVES OF THE PROJECT**

To accomplish this task successfully, the State Project Management Group, Uttar Pradesh has empaneled Civil Society Organization/Non-Governmental Organisations (NGOs) to do the IEC work and motivate households to connect with sewer network of the respective districts. It is expected that CSOs/NGOs would interact with the households/locals and convince them on behalf of the Executing Agencies/Urban Local Bodies to educate them on the benefits of the household connections. CSOs/NGOs have to ensure the success of implementation and long term sustainability of the projects as well as desired 100% household connections so that no untreated water is discharged into the River Ganga.

**COMPONENTS OF THE PROJECT**

- The CSO/NGO will act as an interface between Executing Agencies and SPMG and parastatal bodies which are responsible for developing and maintaining sewerage system in the city like Jal Nigam, Urban Local Bodies (ULBs), local households etc. to achieve 100% target in respect of the respective Districts.
- The SPMG/Executing Agency, U.P. Jal Nigam will provide the details of sewer line laid in a particular allotted area of cities.
- During the course, CSO/NGO is expected to visit the area and enlist the households with address and mobile number and the same is to be communicated with SPMG and Project Manager of Executing Agencies/Urban Local Bodies. The CSO/NGO will educate the households for demand generation and handholding for household connections to sewer network by helping and motivating them till the construction is fully achieved.



Lying of Sewer Lines, Muzaffarnagar (U.P.)

- After identification of household which are to be connected with sewer networks of a particular District, the details such as area, address of the houses, name of the owners, mobile numbers with due certification from the Urban Local Bodies/Executing Agencies are to be submitted to SPMG as Urban Local Bodies for uploading on the website /MIS developed by SPMG.
- To accomplish the task, the CSO/NGO is required to do Information, Education and Communication (IEC)/Behavior Change Communication (BCC) for Behavioral change and for sustained usage of these services.
- The final list of household connections after completion of the task will be submitted to SPMG and Urban Local bodies monthly. CSOs/NGOs will have to upload the details of the household connections completed with photographs and other details on MIS developed by UPSPMG.



Verification of Sewer Connection, Namami Gange Program, (U.P.)

**TARGET AREA AND TARGET GROUPS OF THE PROJECT**

The target area of the project is Muzaffar Nagar, Meerut, Ghaziabad and Loni cities of Uttar Pradesh.

**FUNDING AGENCY**

The project is funded by Uttar Pradesh State Ganga River Conservation Agency (UPSGRCA), Department of Urban Development, Government of Uttar Pradesh, Lucknow

**CARRYOUT INFORMATION EDUCATION & COMMUNICATION (IEC) ACTIVITIES AND TO MOTIVATE HOUSEHOLDS TO CONNECT WITH SEWER NETWORK HIGHLIGHTS 2020-21**

- The team of HIFEED visited the project area and enlisted the households with address, mobile number and ID proof etc.
- The IEC for household connections has been done with these households sewage.
- The Organization has worked as a bridge between different Departments and parastatal bodies which are responsible for developing and maintaining sewerage system in the city like Jal Nigam, Urban Local Bodies (ULBs), local households etc. to facilitate household to complete their household connection for achieving 100% target.
- The final list of household connections has been uploaded on the web portal.
- Educate the households for demand generation and handholding for household connections by helping and motivating them for household connections.
- Handholding during the construction phase till completion of household connections to sewer network is fully achieved.
- Done IEC/BCC activities for behavioural change sustained usage of these services.



Awareness Generation Under Namami Gange Program, Meerut & Muzaffar Nagar (U.P.)



## IMPLEMENTATION OF OAK TASAR DEVELOPMENT PROJECT IN DISTRICT CHAMOLI OF UTTARAKHAND

### BACKGROUND OF THE PROJECT

The Uttarakhand state has favourable climatic condition for rearing all kinds of silkworms i.e. Mulberry, Oak Tasar, Muga and Eri. Oak Tasar culture is practiced in the hills of Garhwal and Kumaun. Oak Tasar silkworms are reared on the foliage of *Quercus serrata*, *Q. incana*, *Q. himalayana* & *Q. semicarpifolia*. Oak Tasar host plants are available in abundance in the natural forest of which around 20,000 hectares of natural plantation of *Q. incana*, *Q. semicarpifolia* and *Q. himalayana* are accessible for promoting Oak Tasar culture and providing livelihood to poor families in the hills. Department of Sericulture, Government of Uttarakhand and RTRS, CSB, Bhimtal are actively working for providing adequate technological and extension support. Central Silk Board, Ministry of Textiles, Government of India is the apex body for approval and monitoring of the project.

The project monitoring and evaluation shall be done as per the guidelines of ISDSI/CSS/MGNREGS schemes, where field inspection by the officers of the Ministry of Textiles/DOS/CSB or through any other agency defined by the Ministry of Textiles as well as through impact studies, social audit and third party monitoring through independent Agencies. Apart from this, progress of the project shall be monitored by Project Implementation and Monitoring Committee (PIMC) to be constituted under the Chairmanship of the Principal Secretary/Secretary, Department of Horticulture & Sericulture, Government of Uttarakhand.

### OBJECTIVES OF THE PROJECT

- To consolidate the Oak Tasar sector during next 3-4 years by addressing critical issues of seed production and strengthening silk value chain of Oak Tasar
- To create necessary infrastructure and linkages for stabilization of Oak Tasar Silkworm seed crops and to attain self-sufficiency in production of basic and commercial seed.
- To create a production base for employment generation.
- Sustainable development through technology dissemination, exploitation of natural resources of oak flora and fauna and providing income generating opportunities to hill folk.
- Effective management of Oak Tasar silk value chain.

### COMPONENTS OF THE PROJECT

- Raising and maintenance of new block plantation of *Quercus serrata* with support under MGNREGA. These plantations shall be raised at low and middle altitude for stabilizing seed crops.
- Support for cold storage facilities for preservation of seed cocoons at low altitudes besides developing seed cocoon preservation infrastructure at high altitudes at suitable locations to support basic seed production.



Visit of Secretary Sericulture Govt. of UK under Oak Tasar Project, Joshimath



Training Program under Oak Tasar Project, Joshimath



Preparation of Nursery under Oak Tasar Project, Joshimath



- Establishment of chawki rearing centers to popularize the concept of rearing up to second stage under indoor conditions. These facilities shall be extended to support basic seed rearing by adopted seed farmers.
- Introduction of Seed Zone concept.
- Assistance to private graineur's for production of commercial seed.
- Door to door disinfectant service agent and mobile disease testing to minimize disease losses.
- Rearing appliance and disinfectant support to commercial farmers.
- Integration of value chain addition by supporting reeling/spinning activities for yarn production.
- Capacity building of project personnel and stakeholders through training and exposure visits.
- Support for publicity, technology transfer through awareness programmes, krishi melas, seminar/ workshops, etc.
- Project management and administration.

Around 40% of the total project outlay is to strengthen seed sector. After the consolidation phase of 3 - 4 years, proposed intervention in seed sector will provide sound footing for faster development/expansion of the Oak Tasar culture in terms of seed production required for silk production and employment generation to the poor rural folk in the subsequent years.



Produced Cocoons at Nand Keshri under Oak Tasar Project, Joshimath



Establishment of Nursery under Oak Tasar Project, Joshimath

### TARGET AREA AND TARGET GROUPS OF THE PROJECT

The project is to be implemented in Joshimath Block in the district of Chamoli. Scheduled Tribe families are selected as the target group of the project.

### FUNDING AGENCY

The project is funded by Central Silk Board, Ministry of Textiles, Government of India and Directorate of Sericulture, Government of Uttarakhand.

### IMPLEMENTATION OF OAK TASAR DEVELOPMENT PROJECT HIGHLIGHTS 2020-21

#### ACTIVITIES:

- Nursery raising : 2 (50,000 seedlings)
- Plantation : 26.47 Hac. (45,000 plants)
- Adopt seed rearing shed : 8 sheds
- DFL'S reared : 500 in Auli
- Cocoons Produced : 25000
- Farmers study tour at ATI, Guptkashi : 25 farmers (15 December 2020)
- Spinning and reeling machine : Distribution of 2 reeling & 4 spinning machines
- Distribution of equipment and disinfectants to beneficiaries of oak tasar rearers & adopt seed rearers
- As a contribution of MGNREGA in the Project an amount of Rs. 19 Lakh has been approved under MGNREGA & Rs. 1.5 Lakh has been raised till now.

#### TRAININGS:

- Plantation : 39 beneficiaries
- Nursery : 2 beneficiaries
- Oak tasar : 60 beneficiaries
- Adopt seed rearers : 3 beneficiaries
- Private Grenuers : 1 beneficiary

## ESTABLISHMENT OF 30 BEDS YOGA & NATUROPATHY HOSPITAL AT HIFEED CAMPUS, RANICHAURI, TEHRI GARHWAL

### BACKGROUND OF THE PROJECT

The systems of Naturopathy & Yoga are the good old Indian traditional systems of health care having the history of centuries. These systems are having their own principles, concepts and practices derived from the traditional literatures and are time tested. Both these systems are purely drugless in nature and having the potentiality in the health promotion as well as disease prevention and management of several modern day diseases.

In spite of the advancement in the conventional health care delivery system, the number of psycho-somatic and non - communicable diseases is alarmingly increasing. Nevertheless, the side effects of various drugs and other modes of treatment are far reaching. To add to it, with the modern lifestyle, and the growing stress among the people worsened the health care scenario further. Naturopathy & Yoga – primarily being focusing on the change in the lifestyle and to manage the stress effectively, the demand for these systems are increasing day by day.

However, the facilities for Naturopathy & Yoga treatment are not adequate to the extent of demand. There is a need to provide more facility for the people, who are really looking towards these disciplines for promotion of health and to have solace from the disease conditions. Government alone cannot make Naturopathy & Yoga to reach each and every one.

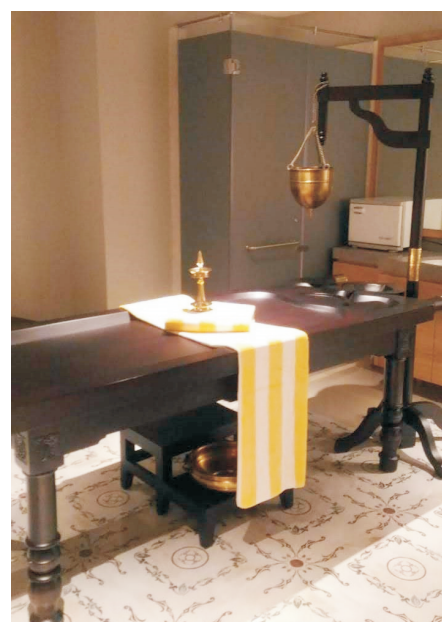
With this background, it is propose to have a scheme through which the Non - Government Organisations could be supported to achieve the desired goal.

### OBJECTIVES OF THE PROJECT

- To encourage the private sector to establish Naturopathy & Yoga Clinics/ Hospitals
- To strengthen the existing Naturopathy & Yoga Centers /Hospitals for better health care facility.
- To encourage the NGOs to provide standardized treatment facilities to the public through Yoga & Naturopathy at nominal rates.
- To make available the Yoga and Naturopathy health care to the maximum number of people
- To make Naturopathy & Yoga treatment affordable to the common man.
- To derive data on the efficacy of Naturopathy & Yoga in the prevention, management of diseases and promotion of health

### COMPONENTS OF THE PROJECT

- Establishment of AYUSH Wellness Centers including Yoga & Naturopathy



**Shirodhara & Panchkrama Cabin  
HIFEED Campus, Ranichauri**



**Shirodhara & Panchkrama Cabin  
HIFEED Campus, Ranichauri**

- Live Yoga demonstration.
- Exhibition of Yoga & Naturopathy modalities through posters and translites.
- Free distribution IEC material.
- Free Consultation.
- T.V. show of Yoga & Naturopathy modalities and treatments.
- Awareness Campaign on Yoga & Naturopathy
- Tele-medicine
- Sports Medicine through AYUSH
- IEC activities
- Research & Development in areas related to Medicinal Plants
- Voluntary certification scheme: Project based.
- Market Promotion, Market intelligence & buy back interventions
- Crop Insurance for Medicinal Plants



**Yoga Session  
HIFEED Campus, Ranichauri**

#### **TARGET AREA AND TARGET GROUPS OF THE PROJECT**

The target area of the project is HIFEED Campus, Ranichauri . The project is open for all the category of the community/target groups

#### **FUNDING AGENCY**

The project is funded by Central Council for Research in Yoga and Naturopathy (CCRYN), Ministry of AYUSH, Government of India, New Delhi



**Naturopathy Cabins  
HIFEED Campus, Ranichauri**

#### **ESTABLISHMENT OF 30 BEDS NATUROPATHY & YOGA INDOOR HOSPITAL HIGHLIGHTS 2020-21**

Renovation and furnishing of the hospital building has been completed. Equipment to run the Naturopathy & Yoga hospital has been procured.



## STRENGTHEN LIVELIHOOD OPPORTUNITIES OF SMALL RUMINANT REARERS IN ECO-FRAZILE MOUNTAINOUS TRIBAL REGIONS OF UTTARAKHAND THROUGH ORGANIZATIONAL NETWORKING SYSTEM FOR PRODUCT DEVELOPMENT & DIVERSIFICATION AND MARKETING

### BACKGROUND OF THE PROJECT

The tribal and other backward cast community and their habitats constitute in very significant mountainous parts of Uttarakhand and Himachal Pradesh. There are five major tribal communities, namely Bhotia, Jaunsari, Raji, Tharu and Buksa, Kinnaura, Lahaule, Gaddi and Gijjar. These tribes are defined as a group with traditional territory, specific name, common language, strong kin relations, association with clan structure, tribal authority and rigid inclination to religion and belief on functional independence, homogeneity, primitive means of exploiting resources, economic backwardness, rich culture and tradition and least desire to change are some of the other characteristics dominant among the tribes. These human groups are known as Scheduled Tribes (ST), "Anusuchit Jati", "Vanjati", "Vanbasi", "Pahari" and "Adimjati", etc. The habitation of a particular tribe is confined to a particular tribal location in the Uttarakhand, such as Tharu and Buksa are confined to Tarai-Bhabar region, while Bhotia (Shauka, Tolcha, Marcha and Jad) are confined to the higher altitudes of Dharchula, Munsyari (Pithoragarh District), Kapkot (Bageshwar District), Joshimath (Chamoli District), Bhatwari and Dunda blocks (Uttarkashi District.), and Raji is confined to Kanalichhina and Champawat Blocks. Likewise, Jaunsari resides in Chakrata and Kalsi blocks of Dehradun District.



**Knitting Program under DST Project**

Despite their habitation in different zones, there is some common features prevailing in the economic and social life of all the tribal communities with minor variations necessitated to maintain a harmonious coordination between the resource availability and needs of the society. Agriculture forms the basic livelihood of Tharu, Buksa and Jaunsari tribes. Milk, meat and wool based animal are the main source of livelihood, apart from these woolen handicraft is also supportive business of these Bhotia tribe. They mainly dependent on animal husbandry and daily wages in various developmental activities like woolen handicrafts. The qualitative symbiotic relationship of the tribal people with forest is the strenuous outcome of their experiences of different survival strategies



**Training Program of Natural Dyeing at Himalayan Weavers**

Agriculture and animal husbandry are the main occupation of the most of the mountainous tribes communities of Uttarakhand and its adjacent regions, small and marginal land holdings coupled through traditional practices of farming, which is always remained insufficient. Income and employment generation opportunities are very less in the area. Road network is very poor and transportation of material from plains to hill areas is very expensive and unaffordable. Health services are very poor in the hilly region. The project areas are suffering from scarcity of drinking water as well as irrigation. Agriculture is totally rain-fed.



**Distribution of Sheep to the Farmers**

Though the tribal beneficiaries of the project traditionally engaged in spinning, weaving and wool processing activities but no any designing inputs on their products has been done since long. This caused to marketing problems to sale their products. Major marketing centers are situated in plain areas of the state but due to shortage of raw material, technical inputs and higher

transportation cost the producers are unable to sell their products in competitive market. Due to adverse environment conditions and inhospitable soil conditions they do not get desired income to sustain their livelihood whole the year. This caused heavy migration of youths from hills to plains. The identified beneficiaries are also engaged in goat and sheep rearing activities since long era.

### OBJECTIVES OF THE PROJECT

- Survey, documentation and compilation of information (including ITK's) related to existing sheep and goat rearing practices, product processing, market linkages and assessment of improved practices on farming communities.
- Training to project partners to select genetically superior breed males of sheep and goat, in particular area for betterment of qualitative and quantitative production of body weight, wool and skin sectors.
- Training to marginal farmers on sheep, goat rearing (breeding, feeding, disease control and management), pasture development, post-harvest product processing, value additions in scientific manner by usage of renewable energy powered equipment (solar) and market linkage.
- Enrich livelihood of marginal farmers by adopting advance technology in processing of wool and rearing of lamb and kids up to optimum age of marketing.
- To facilitate the transhumant and stationary animal breeders with line departments i.e. forest, animal husbandry, MSME, agriculture, organic board, KVK, finance and market support institutions and assess the impact on their livelihood and social security.



**Artificial Insemination of Goats**

### COMPONENTS OF THE PROJECT

- Selection of Project Partners, area and beneficiaries, for implementation of sheep and goat rearing ecological livelihood programme.
- Selection of beneficiaries as per the guidelines as defined by Government of Uttarakhand, so that the same beneficiaries may not get benefits from different welfare schemes and avoid duplicacy in the project.
- Formation of Self Help Groups (SHGs) and federate them in cooperative mode.
- Arrangement of high quality germplasm/breed of sheep and goat by seeking guidance of experts in various locations at different altitudes and terrain, with specific periodicity of migration.
- Purchase of animal as per the guidelines set by the Government of Uttarakhand in a transparent manner.
- Providing improved quality of germplasm/breed to the beneficiaries which would be available in different Government sources and will be distributed as per the Government breeding policy.
- Scientific analysis of the preliminary field data to evaluate the genetic potential of sheep and goat nutritional potential of various feed and fodders.



**Microscopic Analysis of Blood Samples of Goats & Sheep**



**Distribution of Goats to the Farmers**



- Provide veterinary facilities for disease control and improvement in yield of milk, body weight, wool, fur, fiber at different altitudes and terrain conditions.
- Set up Common Facility Center (CFC) by installing the advance equipment operated by solar energy sources and amber charkha for wool processing for value addition chain.
- Awareness and encouragement of organic crop cultivation of local crop/commodities having high nutritional value with advance technique of vermi compost and Bio-fertilizer technology.
- Usage of manure and wastage for organic crop cultivation through vermi compost and Bio-fertilizer technology.
- Impact assessment after completion of the project to evaluate the success of the project.

### TARGET AREA AND TARGET GROUPS OF THE PROJECT

The target area of the project is Dehradun, Uttarkashi, Chamoli and Pithoragarh Districts of Uttarakhand. Scheduled Tribe families of the targeted area are selected as target beneficiaries of the project .

### FUNDING AGENCY

The project is funded by Department of Science & Technology (DST), Ministry of Science & Technology, Government of India, New Delhi



Artificial Insemination of Goats

### STRENGTHEN LIVELIHOOD OPPORTUNITIES OF SMALL RUMINANT REARERS HIGHLIGHTS 2020-21

#### WORK DONE BY COORDINATING AGENCY- HIFEED:

- HIFEED Staff visited to the Goat Fertility Lab in the Deen Dayal Veterinary University, U.P. on 6<sup>th</sup> and 7<sup>th</sup> July 2020 for the purpose of training and procurement of goat semen for Artificial Insemination.
- Oestrus synchronization and artificial insemination in goats for breed improvement has been initiated in the field. As on 31<sup>st</sup> July 2020, a total of 28 goats were administered hormone dose, successively two more dose were administered at an interval of three days i.e. on 2<sup>nd</sup> & 5<sup>th</sup> August 2020 and on 8<sup>th</sup> August 2020 they were inseminated with the frozen semen of Jamunapari breed of goat in the Kalsi block of district Dehradun.



Artificial Insemination of Sheeps

- Pregnancy Diagnosis done in Goats by IDEXX Rapid Visual Pregnancy Kit. For this the blood sample of goats was collected on the 18<sup>th</sup> Day after A.I. (on 26<sup>th</sup> August 2020). Blood plasma of the sample was used for the estimation of Progesterone level by the kit.



- Out of 28 A.I. done on 8th August 2020, we got 7 Kids at Munshi and 3 Kids at Ludhera in the month of January 2021.

- At Kufara village of Purola Block in Uttarkashi, 10 goats were administered hormone dose on 24<sup>th</sup> September 2020 and all 10 goats were Artificially Inseminated on 3<sup>rd</sup> October 2020.

- Out of 10 A.I. at Kufara village of Purola Block in Uttarkashj we g ot 5 kids in the month of March 2021 at Kufara Village.

- At Rauli Gaad village of Dasholi Block in Chamoli, 4 Goats were administered hormone dose on 28<sup>th</sup> September 2020, out of 4 goats two were naturally mated by male buck on 7<sup>th</sup> October 2020.



**Marking after Artificial Insemination**

- Oestrus synchronization and natural mating by selected best available Ram in Sheep for breed improvement has been initiated in the field.

- On 13<sup>th</sup> January 2021, twenty seven sheep were Synchronized at Munshiyari (5 sheep at Jaiti and 22 sheep at Sarmoli village).

- From these 27 sheep, 22 sheep showed signs of Estrus from 12<sup>th</sup> to 15<sup>th</sup> day and were mated by the best available Rams.

- On 22<sup>nd</sup> January 2021, fifteen goats were synchronized at Ludhera village of Kalsi Block and on 23<sup>rd</sup> January 2021, five goats at Khunna- 2 and fourteen goats at Chilla village were synchronized.

- Artificial Insemination of above 34 goats was done on 3<sup>rd</sup> February 2021 at villages Ludhera, Khunna - 2 and Chilla of Kalsi Block.

- Mini spinning plant is fabricated at Vijay Textile Mills, Ludhiana, its installation in Ranichauri, Tehri Garhwal is in process.

- Installation of two solar power operated boms and six solar amber charkha at Ranichauri completed.

- Distribution of two solar amber charkhas to each Partner NGOs of Sheep is completed.

- Product development, design development under progress.

- Some innovative designed products has been developed



**Installation of Solar operated Handlooms**

- Two handbook on sheep (Sheep Development and Sheep Nutrition) and one handbook of different Indian and Exotic goat breeds commonly found in India, has been published.

- Training programme at the beneficiary level on Oestrus Synchronization in Sheep is in Process.

- To full fill its projects objective HIFFED as a coordinating agency has established a successful convergence with the Uttarakhand Sheep & Wool Development Board (USWDB) to facilitate the needs of the small ruminant rearers under the project.

- In this regard, CEO, USWDB, has directed all the concerned Chief Veterinary Officers of our project areas to provide necessary technical aid to the beneficiaries as and when required.

- Online MIS format for data interpretation and collection has been generated by HIFEED, this is aiding in the timely data collection from the Partner NGO's, which is further assisting in the regular monitoring of the progress, scientific analysis and prediction of models.

**WORK DONE AT PARTNER NGO LEVEL:**

- Beneficiaries' selection for the distribution of upgraded livestock and Artificial Insemination treatment for the second year is completed.
- Construction of low cost housing demonstration unit for ruminants is completed at each partner NGO's requested site.
- Training on sheep and goat rearing at Project Partner level has been completed with the technical support of local Veterinary Officer and other technical staff of Uttarakhand Sheep & Wool Development Board/Animal Husbandry Department
- Training on vermi composting at Project Partner level has been completed
- Training on spinning at Project Partner level has been completed
- Training on weaving at Project Partner level has been completed
- Training on Vegetables and Natural Dyeing has been imparted
- Practice of castration has been adopted by the Partner NGOs to cull the inferior buck to maintain the genetic purity of the herd with the aid of the local Animal Husbandry Department.



**Solar operated Amber Charkha**

**PROTECTED OFF-SEASON VEGETABLE CULTIVATION PROJECT FOR INCOME & EMPLOYMENT GENERATION FOR WOMEN IN PAURI BLOCK OF DISTRICT PAURI GARHWAL OF UTTARAKHAND**

**BACKGROUND OF THE PROJECT**

Protected cultivation of vegetables offers distinct advantages of quality, productivity and favourable market price to the growers. Vegetable growers can substantially increase their income by protected cultivation of vegetables in off- seasons as the vegetables produced during their normal season generally do not fetch good returns due to large availability of these vegetable in the markets.

The proposed project area is an important source of supply of off-season vegetables. However, in spite of this due attention has not been given to promote economic development in the region. Consequently, the region continues to be economically depressed and has been by- passed by various programmes of development. In spite of these problems, farmers have shown their willingness in vegetable cultivation. Most of the farmers have given top priority to vegetable cultivation besides other agriculture products.



Protected Vegetable Cultivation Program

**OBJECTIVES OF THE PROJECT**

- Training of selected marginal farmers through demonstrations and implementation for differences in productivity in inorganic and organic farming, to harass the use of chemical fertilizers, pesticides and fungicides, improved methods of composting and cropping pattern and cash crop cultivation.
- Organization of marginal farmers for awareness generation for organic farming, cut off use of inorganic fertilizers, fungicides, pesticides improved method of composting, suggest improved cropping pattern and cash crop cultivation.
- Up - scaling small and marginal farmers for organic cultivation in open and poly house condition, post harvesting and value addition for better prices.
- Standardization of agro- techniques for raising mandate crops over extended periods under different structures and development of their package of practices for catching early markets.



Construction of Poly House & Poly Tunnel

- Establish technical support system for value addition such as sorting, grading, processing, packaging, branding and marketing through formation of CBOs/SHGs.
- Improve the living standard of community/women and reducing drudgery through cultivating high value crops in compact area.

**COMPONENTS OF THE PROJECT**

- Identification of project area, villages and beneficiaries.
- Carried out baseline/bench mark survey of project area.
- Formation of different prodcer graps/SHGs/Kisan Clubs, etc.



Visit of Honorable M.P, Pauri at Project Village



- Training and capacity building of farmers at center and off-center on appropriate technologies of farming system, exposure visits, etc. in collaboration with experts from SAU/KVK/S&T Institutions and Departments.
- Delineation and identification of scientifically and technically appropriate land with farmer families for cultivation of different exotic/european vegetable species.
- Establishment of quality germplasm center/nursery to produce superior quality seed, seedlings and planting material of vegetables to provide the farmers.
- Establishment of low cost poly houses, poly tunnels, walking tunnels for experiments, R&D and production of better quality seed, seedlings and planting materials in protected conditions at farmer's field.
- Establishment of seed bank/agro service center/input supply center to supply the improved agriculture implements, seeds, seedlings, planting material, organic fertilizers, insecticides, pesticides, etc. to the farmers.
- Production of organic manure/vermi compost involving improved technologies at farmer's field.
- Setting up model demonstration site for demonstration of different crops cultivation through use of organic manure and compost.
- Establishment of collection, value addition, grading, packaging, distribution and marketing center for vegetables and vegetable produces.
- Establishment of community friendly advisory service center on technology, marketing information, disease control, farmers problem redressal and also to bring response and quality solution at the village level, even for sudden and emergency situations like crop infection, crop failures, etc.
- Strengthen backward and forward linkages with the farmers for assured supply of internal and external inputs and support services.
- Preparation and publication of scientific literature and books on vegetable/ protected vegetable cultivation techniques.
- Product launching in the market through media, networking, advertisement & publicity, exhibitions & expos, etc.
- Provided farm gate level market by developing forward linkages with external marketing agencies.
- Introduce and integrate the appropriate technologies to increase the vegetable productivity with marketable surplus in commercial, on and off farm production systems.
- Standardization of agro-techniques for raising mandate crops over extended periods under different structures and development of their package of practices for catching early markets.
- Periodic impact assessment, evaluation and output monitoring of the project.
- Popularization of project activities in nearby areas.



**Inspection of Poly Houses by District Administration**



**Training Program on Off- Season Vegetable Cultivation**



**Training of Vegetable Cultivation inside Poly House**

## TARGET AREA AND TARGET GROUPS OF THE PROJECT

The target area of the project is Pauri Block of District Pauri Garhwal of Uttarakhand. The target groups/beneficiaries are comprised the most vulnerable groups of the society which constitute mainly the women of the project area.

## FUNDING AGENCY

The project is funded by Oil & Natural Gas Corporation Ltd., Government of India, New Delhi under Corporate Social Responsibility (CSR).



Vegetable Production inside Poly House

## PROTECTED OFF-SEASON VEGETABLE CULTIVATION PROJECT FOR INCOME & EMPLOYMENT GENERATION HIGHLIGHTS 2020-21

- Baseline survey in the project village is completed, the benchmark of survey is socio-economic condition and farming behavior of the community. The experts were interacted on issues concerned to the social, economic and occupational needs of farmers. During the interaction, the needs of farmers were identified and strategy were planned. The data were complied with resource, seasonal cropping practices, livestock, irrigation pattern schooling, energy availability, transport and other infrastructures were observed.
- Awareness generation programme has been conducted in the project villages.
- Three SHGs have been formed in the project villages. Activities of the SHGs is holding meetings to plan their physical and financial goals, discuss their agenda of action plan and review their progress or action taken so far. They contribute and maintain their SHG's account. They also maintain a common activity log/meeting register assisted by field facilitator.
- Three days training on land preparation for farm activities, seed testing, treatment and seed sowing, post sowing care, surveillance, pre-harvest scientific care, demonstration on crop harvest technology and essential post-harvest package of practices have been completed by the help of Horticulture Department of Pauri and Krishi Vigyan Kendra (KVK), Veer Chandra Singh Garhwali University of Horticulture & Forestry, Bharsar, Pauri Garhwal.
- One day practical training on demonstration and establishing the biological measures such as bio-dynamic composting and vermi-composting units with improved tools and technologies have been completed.
- 15 vermi compost pit have been constructed for composting of organic manure.
- 12 poly- tunnels/walking tunnels have been established for production of quality planting materials, production of organic seeds, in 12 women farmer's field. The structure of poly tunnels were assembled by the farmers by local bamboos, covering over the structure, the poly sheet was facilitated by HIFEED under the project.
- In consultation with technical experts, the 3 master poly houses has been established for demonstration. the frame for poly houses were structured by the expert agency, during developing the structure of master poly houses, the fabricated structure was assembled in the presence of farmers, so the farmers could able to follow and skilled up for installation of poly houses at their own farm site.
- Nurseries have been raised in 12 poly tunnels for supply seedling for transplantation through tending operations like weeding, harrowing, pruning, water sprinkling and spraying is done.
- The fields of the farmers which were barren since many years, now has become productive and farmers are earning handsome remuneration by the sale of exotic vegetables.
- All the activities proposed in the project has been completed.

**PROJECTS/PROGRAMMES/ASSIGNMENTS BROUGHT FORWARD FROM THE PREVIOUS YEAR OF 2019-20**

1. Jan Shikshan Sansthan (JSS), Institute of People's Education (A Continuing Education and Vocational Training Institute) - (Project Sanction Date: 27.02.2006 and Project Duration: 27.02.2016 Onwards )
2. Upgradation of Government Industrial Training Institute (ITI ) through Public Private Partnership (PPP) Mode (Project Sanction Date: 27.02.2006 and Project Duration: 18.03.2011 Onwards)
3. Carryout Information Education & Communication (IEC) Activities and to Motivate Households to Connect with Sewer Network of various Districts of Uttar Pradesh (Project Sanction Date: 09.01.2018 and Project Duration: 01.03.2018 to 31.03.2021)
4. Implementation of Oak Tasar Development Project in District Chamoli of Uttarakhand (Project Sanction Date: 20.01.2018 and Project Duration: 01.04.2018 to 31.03.2022)
5. Establishment of 30 Beds Yoga & Naturopathy Hospital at HIFEED Campus, Ranichauri, Tehri Garhwal (Project Sanction Date: 03.07.2018 and Project Duration: 01.04.2018 to 31.03.2021)
6. Strengthen Livelihood Opportunities of Small Ruminant Rearers in Eco - Frazile Mountainous Tribal Regions of Uttarakhand through Organizational Networking System for Product Development & Diversification and Marketing (Project Sanction Date: 31.12.2018 and Project Duration: 01.01.2019 to 31.12.2021)

**NEW PROJECTS/PROGRAMS/ASSIGNMENTS SANCTIONED DURING THE YEAR 2020-21**

1. Jal Jeevan Mission (JJM) Programme in District Dehradun, Tehri Garhwal, Uttarkashi and Pauri Garhwal in the State of Uttarakhand (Project Sanction Date: 24.04.2020 and Project Duration: 01.07.2020 to 31.03.2022)
2. Formation and Promotion of Farmer Producer Organizations (FPOs) under the Central Sector Scheme for Formation & Promotion of 10,000 FPOs (Project Sanction Date: 18.01.2021 and Project Duration: 01.02.2021 to 31.01.2026)

**PROJECTS/PROGRAMMES/ASSIGNMENTS IMPLEMENTED DURING THE YEAR 2020-21**

1. Jan Shikshan Sansthan (JSS), Institute of People's Education (A Continuing Education and Vocational Training Institute) - (Project Sanction Date: 27.02.2006 and Project Duration: 27.02.2016 Onwards )
2. Upgradation of Government Industrial Training Institute (ITI) through Public Private Partnership (PPP) Mode (Project Sanction Date: 27.02.2006 and Project Duration: 18.03.2011 Onwards)
3. Carryout Information Education & Communication (IEC) Activities and to Motivate Households to Connect with Sewer Network of various Districts of Uttar Pradesh (Project Sanction Date: 09.01.2018 and Project Duration: 01.03.2018 to 31.03.2021)
4. Implementation of Oak Tasar Development Project in District Chamoli of Uttarakhand(Project Sanction Date: 20.01.2018 and Project Duration: 01.04.2018 to 31.03.2022)
5. Establishment of 30 Beds Yoga & Naturopathy Hospital at HIFEED Campus, Ranichauri, Tehri Garhwal (Project Sanction Date: 03.07.2018 and Project Duration: 01.04.2018 to 31.03.2021)
6. Strengthen Livelihood Opportunities of Small Ruminant Rearers in Eco - Frazile Mountainous Tribal Regions of Uttarakhand through Organizational Networking System for Product Development & Diversification and Marketing (Project Sanction Date: 31.12.2018 and Project Duration: 01.01.2019 to 31.12.2021)



7. Protected Off - Season Vegetable Cultivation Project for Income & Employment Generation for Women in Pauri Block of District Pauri Garhwal of Uttarakhand (Project Sanction Date: 04.06.2019 and Project Duration: 01.08.2019 to 31.07.2020)
8. Jal Jeevan Mission (JJM) Programme in District Dehradun, Tehri Garhwal, Uttarkashi and Pauri Garhwal in the State of Uttarakhand (Project Sanction Date: 24.04.2020 and Project Duration: 01.07.2020 to 31.03.2022)
9. Formation and Promotion of Farmer Producer Organizations (FPOs) under the Central Sector Scheme for Formation & Promotion of 10,000 FPOs (Project Sanction Date: 18.01.2021 and Project Duration: 01.02.2021 to 31.01.2026)

#### **PROJECTS/PROGRAMMES/ASSIGNMENTS COMPLETED DURING THE YEAR 2020-21**

1. Carryout Information Education & Communication (IEC) Activities and to Motivate Households to Connect with Sewer Network of various Districts of Uttar Pradesh (Project Sanction Date: 09.01.2018 and Project Duration: 01.03.2018 to 31.03.2021)
2. Establishment of 30 Beds Yoga & Naturopathy Hospital at HIFEED Campus, Ranichauri, Tehri Garhwal (Project Sanction Date: 03.07.2018 and Project Duration: 01.04.2018 to 31.03.2021)
3. Protected Off - Season Vegetable Cultivation Project for Income & Employment Generation for Women in Pauri Block of District Pauri Garhwal of Uttarakhand (Project Sanction Date: 04.06.2019 and Project Duration: 01.08.2019 to 31.07.2020)

#### **PROJECTS/PROGRAMMES/ASSIGNMENTS CARRY FORWARD FOR THE NEXT YEAR OF 2021-22**

1. Jan Shikshan Sansthan (JSS), Institute of People's Education (A Continuing Education and Vocational Training Institute) - (Project Sanction Date: 27.02.2006 and Project Duration: 27.02.2016 Onwards)
2. Upgradation of Government Industrial Training Institute (ITI) through Public Private Partnership (PPP) Mode (Project Sanction Date: 27.02.2006 and Project Duration: 18.03.2011 Onwards)
3. Implementation of Oak Tasar Development Project in District Chamoli of Uttarakhand (Project Sanction Date: 20.01.2018 and Project Duration: 01.04.2018 to 31.03.2022)
4. Strengthen Livelihood Opportunities of Small Ruminant Rearers in Eco - Frazile Mountainous Tribal Regions of Uttarakhand through Organizational Networking System for Product Development & Diversification and Marketing (Project Sanction Date: 31.12.2018 and Project Duration: 01.01.2019 to 31.12.2021)
5. Jal Jeevan Mission (JJM) Programme in District Dehradun, Tehri Garhwal, Uttarkashi and Pauri Garhwal in the State of Uttarakhand (Project Sanction Date: 24.04.2020 and Project Duration: 01.07.2020 to 31.03.2022)
6. Formation and Promotion of Farmer Producer Organizations (FPOs) under the Central Sector Scheme for Formation & Promotion of 10,000 FPOs (Project Sanction Date: 18.01.2021 and Project Duration: 01.02.2021 to 31.01.2026)

## BOARD OF MANAGEMENT/GOVERNING BODY OF HIFEED DURING THE YEAR 2020-21

S.N.	Name & Father's/ Husband's Name	Date of Birth	Profession	Designation	Permanent Address and Contact Nos.	Photograph
1.	Mr. Yogender Kumar Sharma  S/o Mr. Bhagwat Prakash	10.07.1969	Managing Director, Gaura Books India Pvt. Ltd.,  Social Activist & Educationist	President/ Chairman	152/10, Sarai Jullena, Okhla Road, Near Escorts Heart Institute, New Friends Colony, New Delhi- 110025 Mobile No. 09650912866	
2.	Prof. Rakesh Chandra Nautiyal  S/O Late Shri Kashi Ram Nautiyal	27.06.1949	Former Dean, School of Education, S.R.T. Campus, H.N. Bahuguna Garhwal (Central) University	Vice-President/ Vice-Chairman	Sarve Bhavantu Sukhina, 176, Ara Ghar, Dehradun- 248001, Uttarakhand Mobile No. 9411338969	
3.	Dr. Kamal Bahuguna  S/o Mr. Yogesh Chandra Bahuguna	28.12.1967	Executive Director, Himalayan Institute For Environment, Ecology & Development (HIFEED)	Secretary/ Executive Director	HIFEED Campus, Ranichauri- 249 199, District- Tehri Garhwal, Uttarakhand Mobile No. 9412984030	
4.	Mrs. Anuradha Mall  W/o Mr. Vinod Mall	30.11.1960	Indian Administrative Service (IAS)	Director	Plot No. 466, Sector-8, Gandhi Nagar, Gujarat Mobile No. 09978405367	
5.	Mr. Udit Ghildyal  S/o Late Dr. B.P. Ghildyal	21.10.1968	Development Consultant/ Social Activist	Director	B-1/1281, Vasant Kunj, New Delhi- 110 070 Mobile No. 9837757945	
6.	Dr. Suneet Naithani  S/o Late Shri S.P. Naithani	08.03.1966	Assistant Professor, School of Environment and Natural Resources, Doon University, Dehradun, Uttarakhand	Director	H. No. 203, Faculty Home, Doon University, Kedarpuram, Dehradun- 248001, Uttarakhand Mobile No. 9456547707	
7.	Dr. Sunder Singh  S/o Shri B.S. Ranswal	02.01.1968	Associate Professor, Department of Zoology, DAV (PG) College, Dehradun, Uttarakhand	Director	111/3, Shiv Nagar, P.O.- Defence Colony, Dehradun- 248001, Uttarakhand Mobile No. 9412413144	

## KEY PROFESSIONALS/HUMAN RESOURCE OF HIFEEED &amp; JSS (RUNNING UNDER THE AEGIS OF HIFEEED) DURING THE YEAR 2020-21

S.N.	Name of Professional Staff	Designation	Date of Birth	Qualification	Area of Expertise	Total Working Experience	Duration of Work with HIFEEED
<b>I.</b>	<b>PROFESSIONAL &amp; KEY STAFF (FULL TIME)</b>						
<b>1.</b>	Dr. Kamal Bahuguna	Executive Director	28.12.1967	<ul style="list-style-type: none"> <li>● Ph.D. (Environment Management),</li> <li>● M.S.W.</li> <li>● M.B.A. (Disaster Management),</li> <li>● P.G Diploma in Social Work,</li> <li>● B.Sc.</li> </ul>	Participatory Watershed Management, Monitoring & Evaluation, Designing and Organizing Research Studies, Impact Assessment, Need Assessment, Baseline Survey & Studies, Organic Agriculture, Women Empowerment, Participatory Rural Appraisal (PRA), Entrepreneurship Development, Socio-Economic Survey & Studies, Social Audit, Training & Capacity Building, Participatory Monitoring & Evaluation, Natural Resource Management, Environmental Studies, Developing/Designing Training Modules, Preparation of Micro Plans, Perspective Plans & DPRs, etc.	Working Since 1991	Since 1995
<b>2.</b>	Mr. Vipin Kumar	Project Director & Principal Investigator (SWM Project)	19.06.1956	<ul style="list-style-type: none"> <li>● Post-Graduation in Mathematical Economics</li> </ul>	Solid Waste, Liquid Waste & Plastic Waste Management, Monitoring & Evaluation, Designing and Organizing Research Studies, Impact Assessment, Need Assessment, Baseline Survey & Studies, Socio-Economic Survey & Studies, Environmental Sanitation, Training & Capacity Building, Developing/Designing Training Modules, Preparation of Micro Plans, Perspective Plans & DPRs, etc.	Working Since 1994	Since 2010
<b>3.</b>	Anoop Kumar Atheya	Team Leader & Principal Investigator (Sheep & Goat Project)	01.10.1962	<ul style="list-style-type: none"> <li>● B.Sc. Agriculture &amp; AH</li> <li>● P.G Diploma in Management (M.M.)</li> </ul>	Organic Agriculture and Composting, Crop Production Techniques, Micro Planning, Training & Capacity Building, Livelihood Promotion, Social Audit, Developing/Designing Training Modules, Promotion of SHGs, FPOs and CBOs, Participatory Planning, Participatory Watershed Management, Monitoring & Evaluation, Baseline Survey & Studies, Natural Resource Management, Preparation of Micro Plans, Perspective Plans & DPRs, etc.	Working Since 1986	Since 2019



S.N.	Name of Professional Staff	Designation	Date of Birth	Qualification	Area of Expertise	Total Working Experience	Duration of Work with HIFEED
4.	Mr. Vijay Bhatt	Director- JSS (Under the aegis of HIFEED)	02.10.1968	<ul style="list-style-type: none"> <li>● M.Sc.,</li> <li>● Diploma in Business Management</li> </ul>	Training & Capacity Building, Socio- Economic Surveys & Studies, Monitoring & Evaluation, Micro Credit and Micro Finance, Livelihood Promotion, Baseline Survey & Studies, Impact Assessment, Need Assessment, Marketing, Developing Training Manuals and Modules, Participatory Monitoring & Evaluation, Participatory Rural Appraisal (PRA), Social Audit, Preparation of Micro Plans, Perspective Plans & DPRs, etc.	Working Since 1993	Since 2009
5.	Mr. Anil Kumar Tyagi	Project Director & Convener	10.07.1958	<ul style="list-style-type: none"> <li>● M.A. Economics,</li> <li>● P.G. Diploma in Agriculture Marketing</li> </ul>	Monitoring & Evaluation, Micro Credit and Micro Finance, Livelihood Promotion, Impact Assessment, Need Assessment, Baseline Survey & Studies, Marketing, Training & Capacity Building, Developing Training Manuals and Modules, Participatory Monitoring & Evaluation, Participatory Rural Appraisal (PRA), Socio-Economic Analysis, Social Audit, Socio- Economic Surveys & Studies, Preparation of Micro Plans, Perspective Plans & DPRs, etc.	Working Since 1982	Since 2008
6.	Mr. Pankaj Rayal	Administrative & Accounts Officer- JSS (Under the aegis of HIFEED)	07.11.1974	<ul style="list-style-type: none"> <li>● M.Com.,</li> <li>● P.G.D.B.A.,</li> <li>● D.F.A.,</li> <li>● D.C.A.</li> </ul>	Accounts & Administration, Data Entry & Analysis, Micro Credit and Micro Finance, Accounting, Auditing, Statutory Compliance, Legal Matters, Preparation of Balance Sheet, Taxes, GST, Monitoring & Evaluation, Participatory Monitoring & Evaluation, Baseline Survey & Studies, Documentation, Preparation of Micro Plans, Perspective Plans & DPRs, Preparation of Budgets and Annual Action Plans, etc.	Working Since 1996	Since 2002
7.	Mr. Surendra Datt Semwal	Programme Officer- JSS (Under the aegis of HIFEED)	01.05.1972	<ul style="list-style-type: none"> <li>● M.A. Economics &amp; Hindi,</li> <li>● M.S.W.,</li> <li>● B.Ed.</li> </ul>	Baseline Survey & Studies, Impact Assessment, Project Planning & Implementation at Field Level, Monitoring & Supervision, Participatory Monitoring & Evaluation, Participatory Rural Appraisal (PRA), Women Empowerment & Gender Equity,	Working Since 2001	Since 2008

S.N.	Name of Professional Staff	Designation	Date of Birth	Qualification	Area of Expertise	Total Working Experience	Duration of Work with HIFEEED
8.	Dr. Mohd. Umar Saif	Project Coordinator	04.03.1973	<ul style="list-style-type: none"> <li>● Ph.D.,</li> <li>● P.G. Diploma in Ecology &amp; Environment,</li> <li>● Diploma in GIS,</li> <li>● Diploma in Mass Media</li> <li>● B.Sc. Life Science</li> </ul>	<p>Training &amp; Capacity Building, Promotion of SHGs, FPOs and CBOs, Documentation, Preparation of Micro Plans, Perspective Plans &amp; DPRs, Mobilization of Farmers, Field Demonstrations, Organizing Village Level Meetings etc.</p> <p>Biodiversity Conservation, Environmental Studies, Impact Assessment, Monitoring &amp; Evaluation, IEC, GIS &amp; Remote Sensing, Participatory Monitoring &amp; Evaluation, Documentation, Training &amp; Capacity Building, Baseline Survey &amp; Studies, Promotion of SHGs, FPOs and CBOs, Documentation, Mobilization of Farmers, Field Demonstrations, Organizing Village Level Meetings etc.</p>	Working Since 1998	Since 2007
9.	Mr. Manish Verma	Project Manager	10.06.1993	<ul style="list-style-type: none"> <li>● Diploma in Hospitality, Customer Service, Tour &amp; Travel,</li> <li>● Diploma in Hospitality &amp; House Keeping,</li> <li>● M.A. Political Science</li> </ul>	Tourism and Hospitality Management, Baseline Survey & Studies, Impact Assessment, etc.	Working Since 2011	Since 2018
10.	Ruchita Tewari	Project Coordinator	04.05.1993	<ul style="list-style-type: none"> <li>● M.Sc. Environment Management from FRI University,</li> <li>● B.Sc. Agriculture</li> </ul>	Agriculture Extension, Horticulture Development, Environment Management, Crop Production Techniques, Baseline Survey & Studies, Impact Assessment, Project Planning & Implementation at Field Level, Monitoring & Evaluation, Women Empowerment & Gender Equity, Training & Capacity Building,	Working Since 2018	Since 2019

S.N.	Name of Professional Staff	Designation	Date of Birth	Qualification	Area of Expertise	Total Working Experience	Duration of Work with HIFEED
<b>II.</b>	<b>PROJECT STAFF</b>						
<b>11.</b>	Mr. Laxmi Prasad Kothari	C.R.P. (Admin & Field)	15.06.1991	● B.Com & Polytechnic	Baseline Survey & Studies, Impact Assessment & Management	Working Since 2008	Since 2019
<b>12.</b>	Mr. Narendra Bisht	C.R.P. (Field)	17.06.1967	● High School	Baseline Survey & Village Level Meeting & Training etc.	Working Since 1991	Since 2018
<b>13.</b>	Mr. Pooran Singh Negi	C.R.P. (Field)	01.01.1984	● High School	Rearing & Monitoring etc.	Working Since 1998	Since 2021
<b>III.</b>	<b>ADMINISTRATIVE &amp; OFFICE SUPPORT STAFF (FULL TIME)</b>						
<b>14.</b>	Ms. Radhna Panwar	Office Assistant/ Data Entry Operator	04.05.1986	● B.A. ● C.I.C. ● Tally Accounting ● Diploma in Computer Hardware	Data Entry & Analysis, Office Management, Record Keeping, Documentation, Accounts, Typing, etc.	Working Since 2005	Since 2006
<b>15.</b>	Mr. Vijay Singh Negi	Technical Assistant	01.01.1975	● M.A.	Technical Supervision	Working Since 1997	Since 2004
<b>16.</b>	Mr. Rakesh Thapa	Driver	04.12.1974	● 5th Pass	Driving	Working Since 1998	Since 2003
<b>17.</b>	Mr. Chandni Prasad Bijalwan	Attendant	10.04.1969	● High School	Office Assistance	Working Since 1993	Since 1995
<b>18.</b>	Mr. Surendra	Attendant	10.07.1981	● Intermediate	Office Assistance	Working Since 2008	Since 2013
<b>19.</b>	Mr. Brij Mohan Kandari	Driver	05.08.1989	● Intermediate	Driving	Working Since 2009	Since 2019



**INFRASTRUCTURE & ASSETS OF HIFEED AS ON 31 MARCH 2021**

The Organization has its own infrastructure in the form of all inclusive multi facility campus. It houses five wings with all facilities of education, research & development, training, conference, lodging & boarding, etc. It has a strong infrastructure and assets to the value of more than Rs. 12.00 Crores including land, buildings, furniture & fixtures, office equipment, survey equipment, plant & machineries, vehicles, etc. as mentioned below:

<b>S.N.</b>	<b>PARTICULARS</b>	
<b>I.</b>	<b>INFRASTRUCTURE AND ASSETS AT RANICHAURI (OWN)</b>	<b>AMOUNT (Rs.)</b>
	Land and Buildings	3,05,75,000.00
	Furniture and Fixtures	4,95,262.00
	Office Equipment	20,44,568.00
	Lab Equipment	2,41,235.00
	Machinery and Equipment	46,64,778.00
	Mobility	19,80,000.00
	Kitchen and Mess Items	47,255.00
	Naturopathy Equipment	5,30,767.00
	Miscellaneous Equipment and Assets	1,47,527.00
	<b>Sub-Total (I)</b>	<b>4,07,26,392.00</b>
<b>II.</b>	<b>INFRASTRUCTURE AND ASSETS AT DEHRADUN (OWN)</b>	
<b>1.</b>	Land and Building at Administrative Office	1,75,00,000.00
<b>2.</b>	Land and Building at Saandhya Deep Center	5,75,00,000.00
<b>3.</b>	Furniture and Fixtures	5,67,760.00
<b>4.</b>	Office Equipment	12,43,675.00
<b>5.</b>	Mobility	27,42,000.00
<b>6.</b>	Miscellaneous Equipment and Assets	30,488.00
	<b>Sub-Total (II)</b>	<b>7,95,83,923.00</b>
	<b>TOTAL (I + II)</b>	<b>12,03,10,315.00</b>
	<b>or Say</b>	<b>Rs. 12.00 Crores</b>

**FACILITIES AVAILABLE WITH THE ORGANIZATION FOR TRAININGS AND CONFERENCES AS ON 31<sup>ST</sup> MARCH 2021**

<b>S.N.</b>	<b>Facilities</b>	<b>Quantity</b>	<b>S.N.</b>	<b>Facilities</b>	<b>Quantity</b>
<b>1.</b>	Conference Hall	60 Persons	<b>2.</b>	Training Hall-1 <sup>st</sup>	50 Persons
<b>3.</b>	Training Hall-2 <sup>nd</sup>	30 Persons	<b>4.</b>	Lodging & Boarding	40 Persons
<b>5.</b>	Dining Hall	40 Persons	<b>6.</b>	Laptop	07 Nos.
<b>7.</b>	Computers	20 Nos.	<b>8.</b>	Printers	06 Nos.
<b>9.</b>	L.C.D. Projector	02 Nos.	<b>10.</b>	Display Screen	01 Nos.
<b>11.</b>	Handy Cam	01 Nos.	<b>12.</b>	Digital Camera	02 Nos.
<b>13.</b>	Scorpio Jeep	01 Nos.	<b>14.</b>	Bolero Jeep	01 Nos.
<b>15.</b>	Utility Wagon	01 Nos.	<b>16.</b>	Xylo Jeep	04 Nos.
<b>17.</b>	Two Wheelers	03 Nos.	<b>18.</b>	Generator	01 Nos.
<b>19.</b>	Online Training and Video Conferencing System	01 Set	<b>20.</b>	Internet	09 Nos.

**TRAINING & PRODUCTION FACILITIES AND MACHINERY & EQUIPMENT AVAILABLE AT  
COMMON FACILITY CENTRE AS ON 31<sup>ST</sup> MARCH 2021**

<b>S.N.</b>	<b>Facilities</b>	<b>Quantity</b>	<b>S.N.</b>	<b>Facilities</b>	<b>Quantity</b>
<b>1.</b>	Production Centre for Providing Training on Spinning and Weaving Activities	01 Nos.	<b>2.</b>	Common Facility Centre for Providing Wool Carding/ Blending and Washing, Dyeing and Finishing Facilities	01 No.
<b>3.</b>	Handlooms	20 Nos.	<b>4.</b>	Warping Machines	04 Nos.
<b>5.</b>	Flat Knitting Machines	04 Nos.	<b>6.</b>	Jacquard Looms	02 Nos.
<b>7.</b>	Bageshwari Charkhas	55 Nos.	<b>8.</b>	Electric Cone Winder	01 Nos.
<b>9.</b>	Wool Carding/ Blending Plant	01 Nos.	<b>10.</b>	Gill Box	01 Nos.
<b>11.</b>	Washing-cum-Dyeing Machine	01 Nos.	<b>12.</b>	Hydro Extractors	02 Nos.
<b>13.</b>	Drying Tumbler	01 Nos.	<b>14.</b>	Flat Bed Press	01 Nos.
<b>15.</b>	UP Steam Press	01 Nos.	<b>16.</b>	Flat Work Ironer	01 Nos.
<b>17.</b>	Dry-Cleaning Machine	01 Nos.	<b>18.</b>	Air Plasma Plant	01 Nos.
<b>19.</b>	Roller Press	01 Nos.	<b>20.</b>	Sewing Machines	10 Nos.
<b>21.</b>	Wool Dusting Machine	01 Nos.	<b>22.</b>	Wool Opener Machine	01 Nos.
<b>23.</b>	Gill Box	01 Nos.	<b>24.</b>	Bobbiner Machine	01 Nos.
<b>25.</b>	Spinning Machine	01 Nos.	<b>26.</b>	Winding Machine	01 Nos.
<b>27.</b>	Twisting Machine	01 Nos.	<b>28.</b>	Reeling Machine	01 Nos.
<b>29.</b>	Solar Operated Looms	02 Nos.	<b>30.</b>	Solar Operated Amber Charkhas	06 Nos.

**FUNDING PARTNERS OF HIFEED/JSS DURING THE YEAR 2020-21**

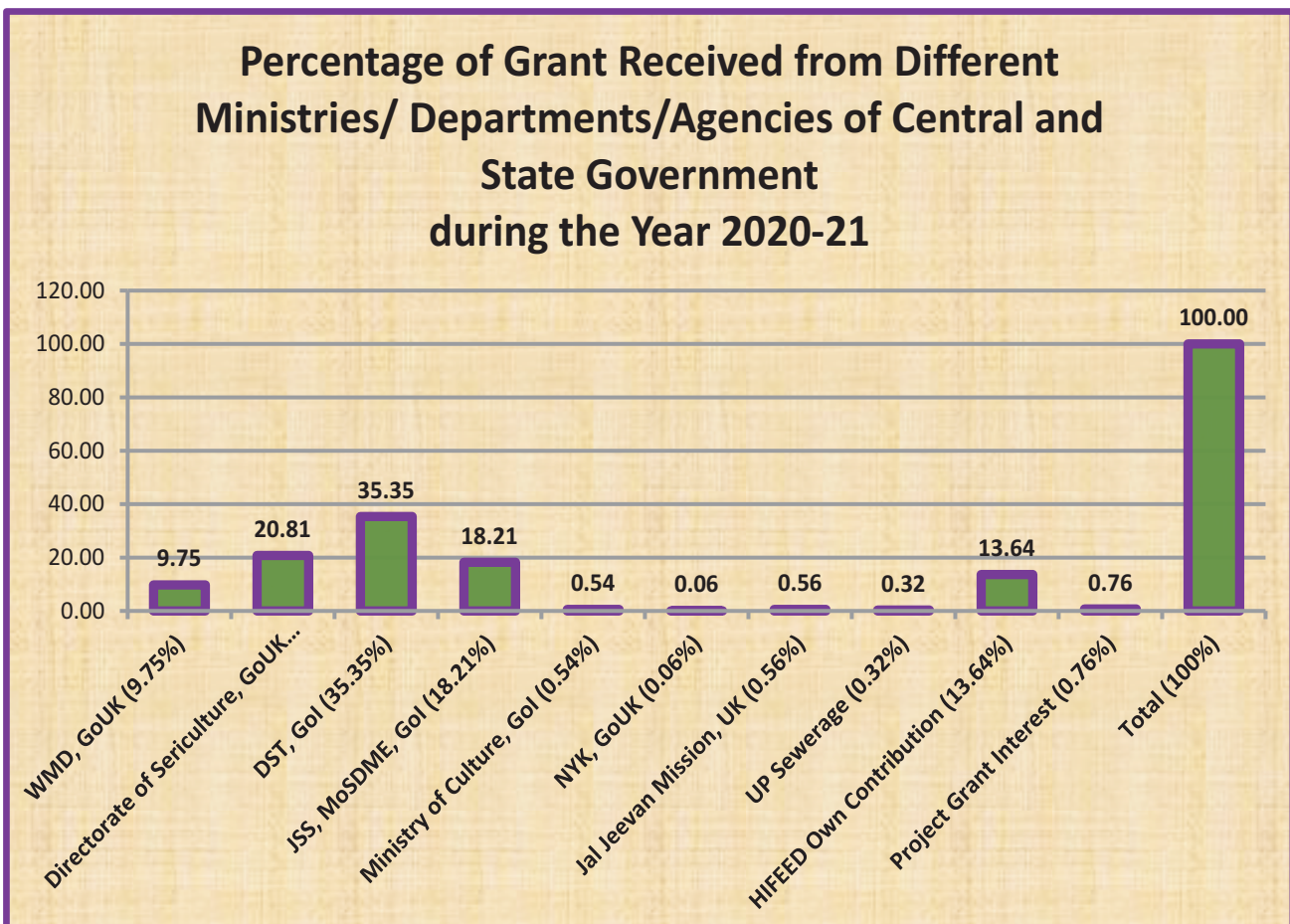
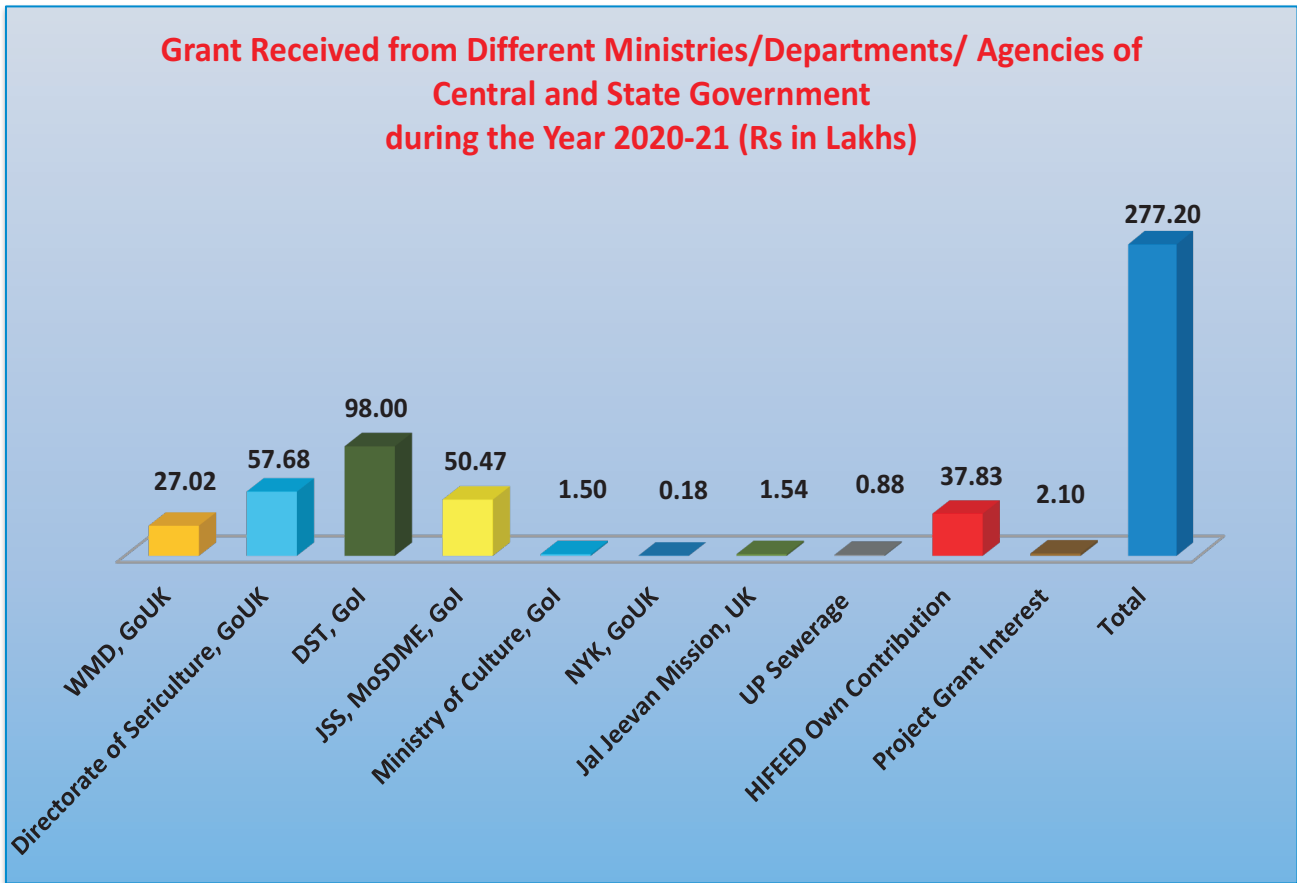
1. Ministry of Skill Development & Entrepreneurship, Government of India, New Delhi (For Jan Shikshan Sansthan- Parent Organization HIFEED)
2. Watershed Management Directorate (WMD), Department of Watershed Management, Government of Uttarakhand, Dehradun, Uttarakhand and International Fund for Agriculture Development (IFAD)
3. Nagar Nigam, Ghaziabad, Uttar Pradesh
4. Directorate of Sericulture (DOS) Department of Sericulture, Government of Uttarakhand, Dehradun, Uttarakhand
5. Department of Science & Technology (DST), Ministry of Science & Technology, Government of India, New Delhi
6. Ministry of Culture (MoC), Government of India, New Delhi
7. Uttarakhand Payjal Nigam, Purodi, Chakrata, District Dehradun, Uttarakhand
8. Uttarakhand Jal Sansthan, New Tehri, District -Tehri Garhwal, Uttarakhand
9. Uttarakhand Payjal Nigam, Pauri, District - Pauri Garhwal, Uttarakhand
10. Nehru Yuva Kendra, New Tehri, District- Tehri Garhwal

**DETAILS OF GRANT RECEIVED BY HIFEED & JSS (PARENT ORGANIZATION HIFEED)  
FROM CENTRAL GOVERNMENT/STATE GOVERNMENT AND OTHER AGENCIES FOR  
DIFFERENT PROJECTS DURING THE YEAR 2020-21**

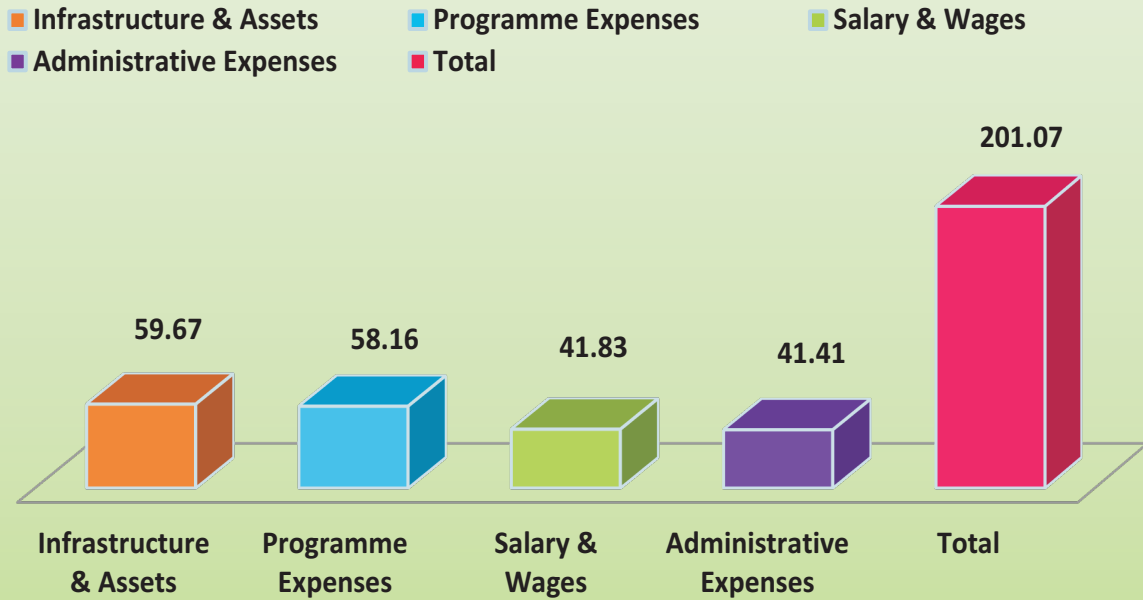
<b>S.N.</b>	<b>Title of the Project</b>	<b>Name of Sponsoring Organization</b>	<b>Grant Received During the Year 2020-21 (Rs.)</b>
<b>1.</b>	Jan Shikshan Sansthan (JSS), Institute of People's Education-A Continuing Education and Vocational Training Institute Running under the Aegis of HIFEED	Ministry of Skill Development & Entrepreneurship, Government of India, New Delhi	<b>50,46,676.00</b>
<b>2.</b>	Social Mobilization Services for Facilitating Implementation of Activities by Communities for Participatory Watershed Development under Uttarakhand Watershed Development Unit (UWDU) Integrated Livelihood Support Project (ILSP) Funded by International Fund for Agriculture Development (IFAD)	Watershed Management Directorate (WMD), Department of Watershed Management, Government of Uttarakhand, Dehradun, Uttarakhand and International Fund for Agriculture Development (IFAD)	<b>27,01,703.00</b>
<b>3.</b>	Carryout Information Education & Communication (IEC) Activities and to Motivate Households to Connect with Sewer Network Muzaffar Nagar, Meerut, Ghaziabad and Loni Cities of Uttar-Pradesh	Nagar Nigam, Ghaziabad, Uttar Pradesh	<b>88,000.00</b>
<b>4.</b>	Uttarakhand Oak Tasar Development Project in District Chamoli of Uttarakhand	Directorate of Sericulture (DOS), Department of Sericulture, Government of Uttarakhand, Dehradun, Uttarakhand	<b>57,68,400.00</b>



<b>5.</b>	Strengthen Livelihood Opportunities of Small Ruminant Rearers in Eco-Frazile Mountainous Tribal Regions of Uttarakhand through Organizational Networking System for Product Development & Diversification and Marketing	Department of Science & Technology (DST), Ministry of Science & Technology, Government of India, New Delhi	<b>98,00,000.00</b>
<b>6.</b>	Training in Traditional and Folk Songs/Music and Dance in Tribal Areas of Chakrata and Kalsi Blocks of Dehradun District in the State of Uttarakhand under the Preservation and Development of Cultural Heritage of Himalayas	Ministry of Culture (MoC), Government of India, New Delhi	<b>1,50,000.00</b>
<b>7.</b>	Jal Jeevan Mission (JJM) Programme in District Dehradun in the State of Uttarakhand	Uttarakhand Payjal Nigam, Purodi, Chakrata, District Dehradun, Uttarakhand	<b>30,653.00</b>
<b>8.</b>	Jal Jeevan Mission (JJM) Programme in District Tehri Garhwal in the State of Uttarakhand	Uttarakhand Jal Sansthan, New Tehri, District -Tehri Garhwal, Uttarakhand	<b>41,150.00</b>
<b>9.</b>	Jal Jeevan Mission (JJM) Programme in District Pauri Garhwal in the State of Uttarakhand	Uttarakhand Payjal Nigam, Pauri, District - Pauri Garhwal, Uttarakhand	<b>82,412.00</b>
<b>10.</b>	Training Programme for Youth Leadership Capacity Development	Nehru Yuva Kendra, New Tehri, District- Tehri Garhwal	<b>18,000.00</b>
<b>11.</b>	Miscellaneous Receipts for Different Programmes and Activities	By HIFEED's Income Generating Activities, Individual Donors, Bank Interest and other Own Sources	<b>39,93,334.97</b>
	<b>Total</b>		<b>27,720,328.97</b>

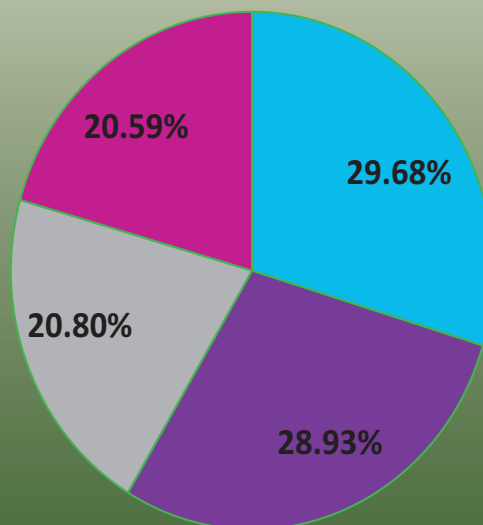


### Expenditure details of HIFEED during the Year 2020-21 (Rs. in Lakhs)



### Percentage-wise Expenditures of HIFEED during the Year 2020-21

- Programme Related Infrastructure (29.68%)
- Programme Expenses (28.93%)
- Salary & Wages (20.80%)
- Administrative Expenses (20.59%)





## FINANCIAL HIGHLIGHTS 2019-21

INCOME & EXPENDITURE	RECEIPTS & PAYMENTS	BALANCE SHEET	INCOME & EXPENDITURE	RECEIPTS & PAYMENTS	BALANCE SHEET
2,34,26,573.10	5,27,22,256.83	7,43,90,897.28	<b>Central Office -HIFEED</b>		
			41,66,856.80	2,10,95,491.47	3,22,02,957.07
			<b>A Pilot Project on Production &amp; Processing of Angora Wool for Income &amp; Employment Generation in District Tehri Garhwal of Uttarakhand (MoRD)</b>		
			00.00	5,375.72	1,50,36,749.72
			<b>Marketing of Rural Products in Uttarakhand through Grameen Shilp Emporiums (MoRD)</b>		
			00.00	860.00	860.00
			<b>Women Dairy Development Project under Scheme of Support to Training and Employment Programme for Women (STEP) in District Tehri Garhwal of Uttarakhand (MWCD)</b>		
			-	-	953,214.00
			<b>Consultancy Service for Preparing Slum Profile Conduction Household Surveys in Slums and Informal Settlements of 63 Towns in Uttarakhand State (IPMU/ Asian Development Bank)</b>		
			0.00	0.00	5,83,833.00
			<b>A Pilot Project for Establishment of Model Bio-Villages with the Concept of Organic Vegetables Cultivation Through Protected Cultivations Techniques for Livelihood Promotion of Women in District Tehri Garhwal in the State of Uttarakhand</b>		
			194.00	7,227.46	1,91,318.96
			<b>Leadership Development Training Programme at Shamli District of Uttar Pradesh under the Scheme for Leadership Development of Minority Women (Nai Roshni) (MoMA)</b>		
			2,997.00	1,14,086.99	1,70,086.99
			<b>Social Mobilization Services for Facilitating Implementation of Activities by Communities for Participatory Watershed Development under Uttarakhand Watershed Development Unit (UWU)-Integrated Livelihood Support Project (ILSP)</b>		
			32,69,662.00	39,49,146.00	8,43,011.17
			<b>Bio-methanation, Biogas and Bio Slurry Generation from Food Waste at Pilgrim Destination of Srinagar, Garhwal by Installing Improved Tubular Modular Bio Digester in Collaboration with Nagar Palika Parishad, Srinagar</b>		
			1,927.30	1,61,030.50	6,15,210.50

			<b>Protected Off Season Vegetable Cultivation Project for Income &amp; Employment Generation for Women in District Pauri Garhwal of Uttarakhand (I)</b>		
			00.00	00.00	2,29,781.00
			<b>A Pilot Project for Promotion of Village Tourism in the Outer Periphery of Tehri Dam to Ensure Sustainable Livelihood Options to Youths and Women by protecting Environmental and Local Cultural Heritage</b>		
			1,140.00	13,335.64	7,87,205.24
			<b>Establishment of 30 Bedded (Naturopathy &amp; Yoga Centre)</b>		
			2,500.00	93,446.66	15,14,248.66
			<b>Sericulture Development Project</b>		
			58,45,226.00	1,01,32,549.00	96,80,303.00
			<b>Strengthen Livelihood Opportunities of small Ruminant Rearers in Eco-Fragile Mountainous Tribal Regions of Uttarakhand through Organizational Networking System for Project Development &amp; Diversification and Marketing</b>		
			98,80,595.00	1,66,38,439.73	1,14,95,054.01
			<b>Scientific Explanation of so Called Superstition Miracles Tricks</b>		
			1,686.00	1,00,211.48	31,637.78
			<b>Training in Traditional and Folk Songs/Music and Dance in Tribal Areas of Chakrata and Kalsi Blocks of Dehradun District</b>		
			1,52,289.00	3,08,245.60	48,210.20
			<b>Protected Off Season Vegetable Cultivation Project for Income &amp; Employment Generation for Women in District Pauri Garhwal of Uttarakhand (ONGC-II)</b>		
			1,01,500.00	1,02,810.58	7,216.58
<b>TOTAL</b>					
<b>2,34,26,573.10</b>	<b>5,27,22,256.83</b>	<b>7,43,90,897.28</b>	<b>2,34,26,573.10</b>	<b>5,27,22,256.83</b>	<b>7,43,90,897.28</b>

Place: New Tehri  
Date: 15<sup>th</sup> August 2021

Sd/-  
(Dr. Kamal Bahuguna)  
For HIFEED

Sd/-  
(CA. Manoj Singh Bora)  
For MANOJ BORA AND ASSOCIATES  
Chartered Accountants  
ACA  
M.N.: 454707  
UDIN: 21454707AAAAAD8398